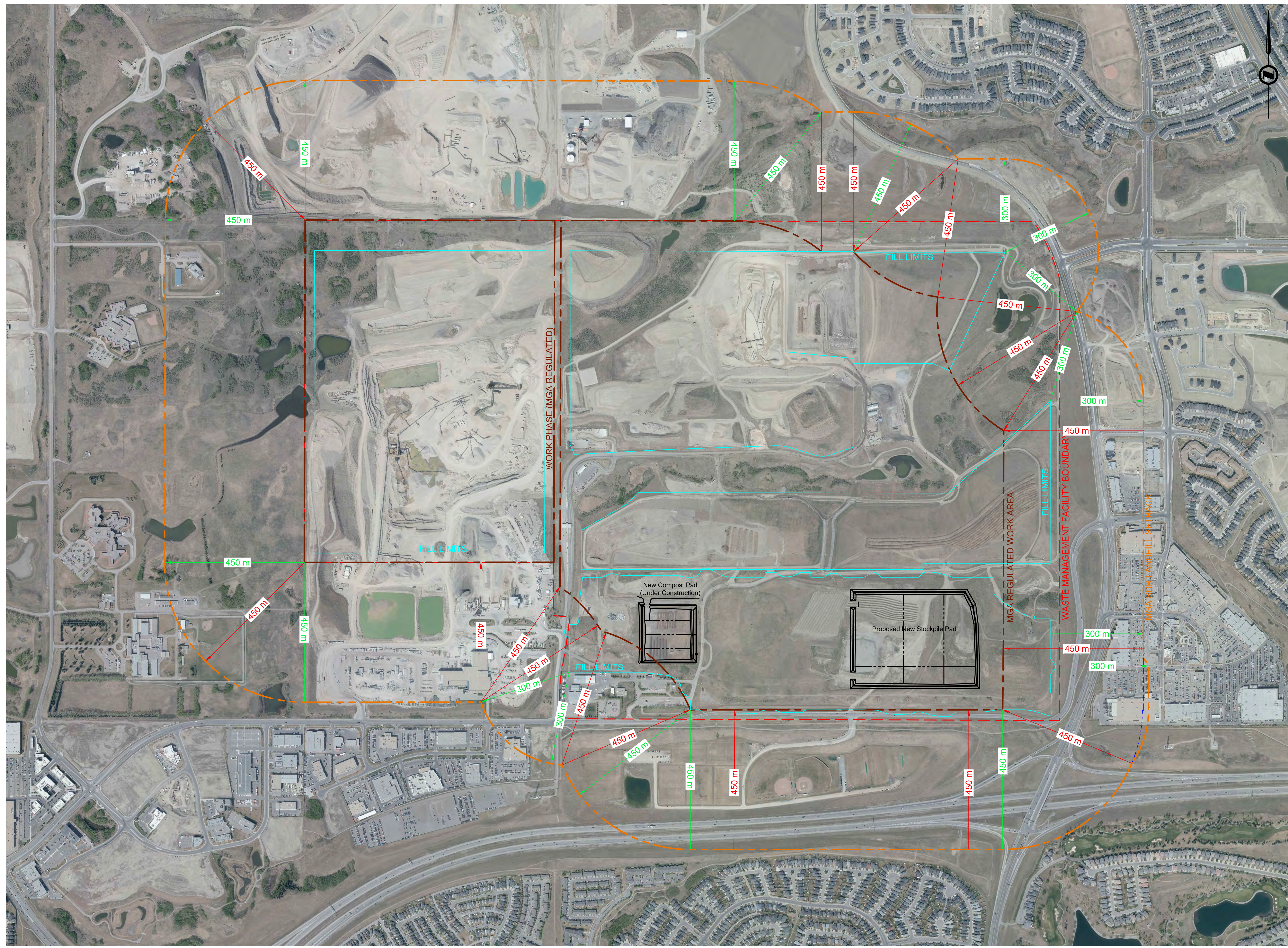


FILE: W:\P\DRAWING\DATA\SPYHILL\1577003.DWG DATE: Tuesday, September 19, 2017 8:02:09 AM



**NOTES**

1. ALL COORDINATES AND DISTANCES ARE BASED ON 3TM COORDINATE SYSTEM (NAD 83).
2. ORTHOPHOTO: SEPTEMBER 2016

ALBERTA CALL BEFORE YOU DIG 1-800-242-3447

**NAD 83 COORDINATES**

ALL PIPE SIZES ARE IN MILLIMETRES AND ALL DIMENSIONS ARE IN METRES UNLESS OTHERWISE NOTED

NO.	DESCRIPTION	DATE (YYYY-MM-DD)	BY	APPD
1				

DISCLAIMER: THIS MAP IS INTENDED TO PROVIDE USERS GUIDANCE ONLY ON LANDFILL SET-BACKS. USERS ARE ADVISED TO CONSULT THE CITY OF CALGARY FOR PROJECT SPECIFIC REQUIREMENTS. CONFIRMED AS CORRECT AS AT SEPTEMBER 15, 2017 BUT ARE SUBJECT TO CHANGE.

Signature: *R. K. Ueh...*  
 (DIRECTOR OF WASTE & RECYCLING SERVICES, THE CITY OF CALGARY)

	BY	DATE (YYYY-MM-DD)
DESIGNED	GL	2017-06-13
DRAWN	FS	2017-06-13
CHECKED	GL	2017-06-13

SCALE: 1:6000

**Calgary** WASTE & RECYCLING SERVICES

PROJECT: SPYHILL WASTE MANAGEMENT FACILITY

SEC: 26 - TWP: 25 - RGE: 2 - W 5th M

SHEET TITLE: MGA SDR LANDFILL SETBACK

FILE NO. 1577003.DWG	MICROFILM NO.
SHEET NO.	SHEET COUNT 1 of 1