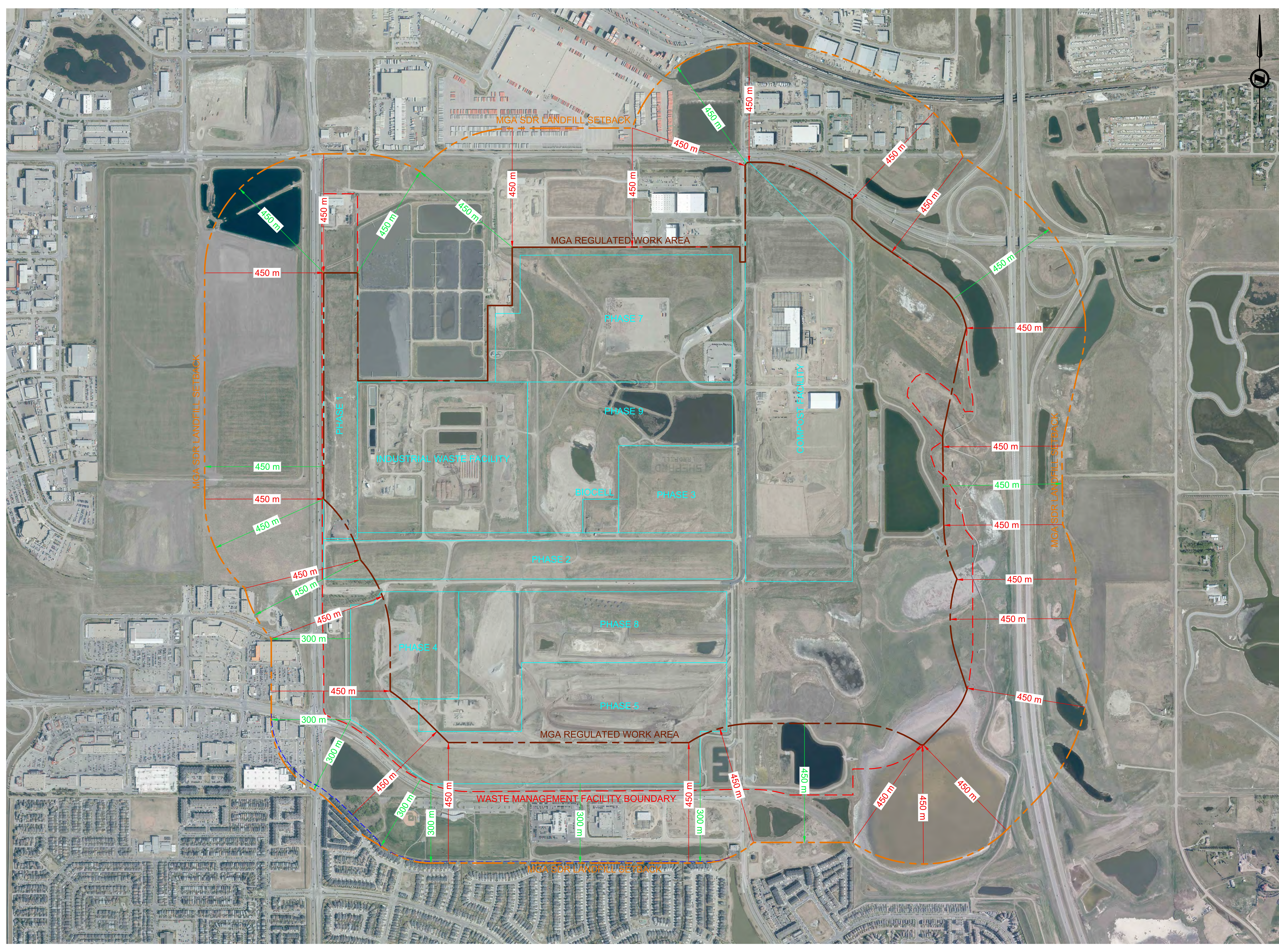


FILE: W:\P\DRAWING\DATA\SHEPARD\3554000\DRAWING\3554002.DWG DATE: Tuesday, September 19, 2017 4:50:06 AM



### NOTES

1. ALL COORDINATES AND DISTANCES ARE BASED ON 3TM COORDINATE SYSTEM (NAD 83).
2. ORTHOPHOTO: SEPTEMBER 2016.

ALBERTA CALL  
CALL BEFORE YOU DIG  
1-800-242-3447

**NAD 83**  
COORDINATES

ALL PIPE SIZES ARE IN MILLIMETRES AND ALL DIMENSIONS ARE IN METRES UNLESS OTHERWISE NOTED

NO.	DESCRIPTION	DATE (YYYY-MM-DD)	BY	APPD
1				

DISCLAIMER: THIS MAP IS INTENDED TO PROVIDE USERS GUIDANCE ONLY ON LANDFILL SET-BACKS. USERS ARE ADVISED TO CONSULT THE CITY OF CALGARY FOR PROJECT SPECIFIC REQUIREMENTS. CONFIRMED AS CORRECT AS AT SEPTEMBER 15, 2017 BUT ARE SUBJECT TO CHANGE.

*R. K. Vell*

SIGNATURE (DIRECTOR OF WASTE & RECYCLING SERVICES, THE CITY OF CALGARY)

	BY	DATE (YYYY-MM-DD)
DESIGNED	GL	2017-06-21
DRAWN	FS	2017-06-21
CHECKED	GL	2017-06-21

SCALE 1:7000

Calgary

WASTE & RECYCLING SERVICES

PROJECT

SHEPARD WASTE MANAGEMENT FACILITY

SEC. 1, 2, 11, 12 - TWP: 23 - RGE: 29 - W 4th M

SHEET TITLE

MGA SDR LANDFILL SETBACK

FILE NO. <b>3554002.DWG</b>	MICROFILM NO.
SHEET NO. -	SHEET COUNT <b>1 of 1</b>