

CITY OF CALGARY

**PARKS,  
CEMETERIES AND  
RECREATION.**



**1958**  
**ANNUAL REPORT**



**A. MUNRO,**  
SUPERINTENDENT.



"The Kiss of a Song For Pardon,  
The Song of a Bird for Mirth,  
One is Nearer to God in the Garden,  
Than Anywhere else on Earth".

- Annon -

CITY OF CALGARY PARKS DEPARTMENT  
ANNUAL REPORT - 1958.

To His Worship Mayor D. H. Mackay,  
The Board of Commissioners,  
and Members of the City Council.

Ladies and Gentlemen:

It gives me great pleasure to once again present to you, my annual report on the development and expenditures of the Parks and Recreation Department for the year ending December 31, 1958. The past year was one of expansion and development both in the horticultural and recreational field.

The weather, which is always an important, if not the most important factor for success in horticultural and recreational enterprises, proved very satisfactory during the year. We have experienced no hail in the vicinity of Calgary, due largely, I believe, to having hail suppression cover the district.

With the extensive housing projects which are underway in the City the ever-increasing demands for floral and recreation parks are still evident. During 1958, no fewer than nineteen parks and recreation sites were developed, some in part and others completed.

HIGHLIGHTS OF THE YEAR'S PROGRAMME.

The grounds at the Institute of Technology and Art on the 10th St. N. W. Hill have been completed. The expense for the construction of this beauty spot was borne by the Provincial Government. It is now up to the City of Calgary to maintain these grounds for the next twenty years, after which, a new agreement will have to be drawn up between the Province and the City.

Meadowlark Park -- a floral park approximately four acres, located at McKay Road and Meadowlark Crescent was completely developed. It was graded, loamed, and seeded to grass, trees and shrubs planted, and flower beds made ready for planting this spring. Also, new water lines were laid. All the homes in this district overlook the Park giving a very pleasing effect.

An area of three hundred feet square was developed for a baseball diamond on the Pearce Estate in East Calgary. The people and children in this area now may enjoy two recreation sites to carry out their recreational activities. The remainder of this Park is to be developed for picnic purposes and other forms of sport.

Prince's Island received a general clean-up, as well as a number of improvements. Underground water pipes for drinking water and picnic purposes were installed, swings and teeters were put up, and also, tiny tots' playground equipment. Barbecue stoves were built as well, and a recreation building has been started as this area is fast becoming a very popular picnic spot.

South Calgary Park and the Swimming Pool Ground recieved a renovation which was badly needed. Tow and one-half acres of this Park was top-dressed with eighty yards of loam, and seeded to grass.

Two new playground areas in the Kingsland District were loamed by the Kelwood Corporation - the Parks Department being responsible for the seeding. Playground equipment and water lines were also installed here. The triangles located in this new district, were landscaped, thereby, improving the appearance of this area considerably. The entrance to the Foot Bridge on the Riverdale Ave. site was landscaped, and fourteen new beds were constructed in Meadowlark Park and water lines put in.

Due to the many complaints received from the residents on Lansdown Avenue, about the unsightly hillside and silt washing down into their gardens, lawns, etc., we loamed and seeded this troublesome bank to grass. Shrubs will be planted this coming spring to hold the bank.

In Riverview Park, seven new shrubs and tree beds were made, bare spots in the area which were developed last year were top dressed with loam, and seeded, afterwhich 225 mixed shrubs and 65 trees were planted. At Sandy Beach, the roads were cut out and a parking lot made to accommodate 50 cars. The roads into the parking lot itself were fenced. A large picnic area along the River Bank at Sandy Beach had barbecues, picnic tables, and restroom facilities installed. This Beach has certainly proved to be popular with the young and old alike, as a beautiful picnic site.

The Elbow Park district, had approximately 500 trees and shrubs planted on the Premier Way Slopes this past spring. A total of 953 trees and shrubs were pruned in this district. This included work done for the Electric Light Department. On 40th Ave. East of the Elboya Bridge, a new natural park was partially developed. This will be a most attractive area when completed as it is situated along the Elbow River. The usual maintenance was carried out in the older park and recreation areas in this district.

The cloverleafs at 14 St. S. W. received a good deal of attention during the past season. The usual maintenance was carried out, plus new flower beds cut, trees and shrubs planted, and a railing made to prevent the cars from driving over the lawns. This area has become a great beauty spot, and has been remarked on by the tourists as well as citizens of this City, and has definitely become an asset to Calgary.

Usual maintenance was carried out at the Reader Rock Garden, and also some renovating of paths and portions of the garden. The greenhouse was completely uplifted and a new watering system laid. Many of the trees, shrubs, and plants growing in this Garden were propagated and shipped out to different rock gardens and parks in different countries. This area is indeed a beauty spot.

The Buffer Strip on the Northwest Hill between Simpson Sears Shopping Centre and the residents to the South, was completely bulldozed, loamed and seeded to barley and course grass. This green belt of land has yet to be planted up with trees and shrubs. The area consists of approximately eleven acres. 305 yards of loam were hauled onto the site, 865 lbs. of grass seed being used along with 625 lbs. of barley seed. 150 feet of cable fencing was constructed in order to keep trucks from driving across the park.

The Hillside below Earl Grey School was loamed and seeded to grass. This was rather a difficult project because of the steepness of the Hillside. At Park lane, in the same vicinity, a central boulevard was constructed, clay and gravel being removed from the boulevards and then loamed and seeded to grass. Trees and shrubs will have to be planted on the boulevard this coming spring.

Sunnyside Central boulevard from 4A St. N. W., eastward to Centre St. Bridge was loamed and seeded, and tree and shrub holes dug for planting in the spring.

An agreement between the Provincial Government, Calgary Power Co., and the City of Calgary, to raise the dykes on the North side of the Bow River, was responsible for the Parks Department's loaming and seeding this dyke. The strip completed, is from Louise Bridge to 4A St. N. W. Further work will have to be done this coming spring.

On the South side of the Bow River, and East of Centre Street Bridge, a start was made on the beautification of the South side of the River bank. The area, approximately  $1\frac{1}{2}$  acres of ground was graded, and loamed in preparation for spring seeding and the planting of trees and shrubs.

Bowview Park, North of the Bowview Swimming Pool, was graded and 190 yards of loam spread on the area and seeded down to coarse grass.

The Glendale Recreation area was partly developed this past season. This was a rather expensive and difficult development because of the nature of the terrain. However, when completed, it will be an unusual park, more or less a sunken recreation park. The perimeter of the site will be planted with trees and shrubs which will give it a most attractive appearance when completed.

The small triangle park on Exshaw Road and 22 St. N. W. was completed. This consists of one acre of ground. The area is suitable for a floral park only due to the nature of the layout.

St. Andrew's Heights Recreation area, north of 12 Ave. N. W., was graded, loamed, and seeded to grass, and a Community Building erected on this site. Due to the dust menace in this district, the Parks Department seeded down a large portion of City property to barley. This, of course, was paid for by the Engineering Department.

A small triangle park at 32 Ave. and 6 St. was bulldozed, loamed and seeded down to grass, making it a very useful area for the small children who live in the district. There are a number of apartment buildings around this location without lawn or grass areas surrounding them.

The floral park at Poplar Road and Willow Crescent in Wildwood, and an area of 33,000 square feet, was graded, loamed and seeded. This is another park where the homes look onto the Park. Trees, shrubs, and flower beds have yet to be planted here. Waterlines have already been installed here.

Britiannia Drive and 50th Ave. S. W. is another area consisting of one acre and which could not be completed in the past as there was no curbing. It has now been completed to the satisfaction of the residents who live along this beautiful driveway, and is a definite asset to the City.

Thorncliffe and Centre Street, Northmount Drive was landscaped in front of the community buildings. This area consisted of approximately one acre of ground and the loam used was fifteen yards, plus one hundred yards of fill. The front of the community building will be planted up with trees and shrubs this coming spring.

At Millican Heights, a start was made on the planting of trees to create a green belt between the residents of Millican and the Imperial Oil Storage Tanks belonging to that firm. This certainly will enhance the area when completed. Maintenance in this part of the City was carried out as usual, and the Pearce Estate Park road was levelled this season, and widened, the same being accomplished on the parking lot. Two nice baseball diamonds are now in use at this Park, and are very much appreciated by the people in this portion of the City.

In Memorial Park, 2,810 tulip bulbs of various colors were planted in October. However, there were complaints received about the condition of gravel paths in Memorial Park, being so hard to walk on. Children also scattered the gravel on lawn causing no end of trouble for the power mowers, nevertheless, the usual high standard of maintenance was experienced.

A new district has been built up South of the Elbow River from 2nd St. East, west to Britiannia Drive and south to the City Limits. In this district, a new park known as Stanley Crescent was developed, being laid with four new shrub beds and forty-eight mixed shrubs being planted in these beds, and six trees planted on the perimeter. Water lines were also laid here.

Windsor Park in this District as well, had two new shrub beds made. Ten spruce trees, ten birch trees, as well as ten lilacs were planted here. Upper Parkdale Recreation Grounds have been completed, giving the people in this area, a nice place to play. A wading pool was constructed in this Park by the combined efforts of the West Hillhurst Kiwanis Club and the City of Calgary.

Child's Ave. Recreation Park in the northeast district was loamed and seeded to grass. This Park had 100 yards of loam spread on it and seeded to grass. The district was in much need of a recreation park because of the great number of children.

Exshaw Road and 22nd St. N. W., was completed, consisting of approximately one acre of land. This park is just suitable for a floral park because of the terrain.

Weed control throughout the City was carried out again this season. All complaints regarding weed-infested areas were taken care of by the Weed Inspector and his crew. Unwanted vegetation on parking lots, boulevards, cemeteries, golf course, and larger parks were treated and kept in check with chemical treatment, as this seems to be the only solution to this problem.

#### BY-LAW WORK:

Each year, the volume of boulevard construction is decreasing, due to the new districts having their boulevards included inside the sidewalk adjoining their property. During 1958, a total of 2,769 feet of boulevard was constructed, 2413 feet prepared, and expected to be completed next spring.



Park land along 10th Street, N. W.



Work in progress in beautifying the river banks



## SURVEY OF EMPLOYMENT:

Under direction of the Personnel Department and the National Employment Service, many temporary workers were hired. It seemed at times difficult to obtain personnel who had sufficient experience or, in the case of New Canadians, to adapt themselves quickly to our type of work, but in a period of unsettled work conditions and unemployment, these problems can be expected. However, we were fortunate in meeting a few who had previous training along the lines of gardening and nursery work, but again, the fact that our work is of necessity seasonal and skilled labourers seek permanent positions, poses as a problem in itself.

At the peak of the season, the Department had a total of 432 employees, both permanent and temporary. Below is shown a distribution in the various branches of the Department:

	<u>Temporary</u>	<u>Permanent</u>	
Administration (Office)	1	11	
Construction & Horticultural Division	179	14	
Cemeteries Division	59	17	
Mechanical, Maintenance Div.	8	22	
Zoo	2	8	
Recreation & Sports	<u>92</u>	<u>19</u>	
TOTAL	341	91	= <u>432</u>

## SAFETY:

Out of a total of 403,160 man-hours worked in this Department, the number of hours lost have shown a comparative decline over the figure of previous years. Thanks to the tireless efforts of the Safety Division, our foremen and their crews are becoming more safety conscious. Lectures, training courses, and constant vigilance on the part of each foreman will reduce, we hope, accident statistics even further in coming years.

## BOULEVARDS:

The older boulevards are increasingly in need of repair, many complaints from residents thereby being received by this Department. In places, the boulevards had sunk or the grass had died away, and in some instances, dead or overgrown trees needed to be removed. Trees with deep or sprading root systems, very frequently interfere with the sewer or water lines and must be taken out. In a number of districts, the shrubbery required pruning as branches were overhanging the sidewalk or obstructing the view of the motorists at intersections. Some 186 trees were removed during the year.

## TREE PLANTING:

The completion of a boulevard includes the planting of trees and shrubs. During the past season, the planting of 71 trees and 73 shrubs on various boulevards were carried out on By-law work, and by special petition, 2,694 trees and 3,045 shrubs were planted.

## Tree Planting (continued)

Considering that a sapling of today is the tree of tomorrow, the roadways along the Bow and Elbow Rivers can be transformed into very scenic drives. The benefits from the presence of trees to human health has long been confirmed, and with this as well as their ornamental value in mind, the City will be fortunate in having shaded drives and tree-lined streets and avenues in only a few years' time.

The varieties of shrubs which thrive and are recommended for Calgary and the surrounding district are Dogwood, Honeysuckle, Nanking Cherry, Caragana, Lilac and Cotoneaster, and trees most suitable are Elm, Ash, and Birch. The response to the boulevards planting was very keen, and it became necessary to leave a great many requests for trees and shrubs until the following spring.

During the year, a total of 9,768 trees and shrubs were issued from the Nursery, and planted throughout the City.

### NURSERY AND GREENHOUSE:

One of the busiest seasons was experienced at the Civic Nursery this past year, and the conditions proved to be more encouraging than any other year. Everything was kept well cultivated and watered throughout the season. The weather conditions were ideal, the rain and the sun seeming to come at the right time. Approximately 9,768 trees and shrubs were sent out from the nursery, including the following varieties:

304	Ash	220	Philadelphus
2,464	Birch	325	Tomentosa
313	Spruce	218	Spiraea
153	Poplar	1,192	Honeysuckle
95	Mixed	1,503	Lilac
1,047	Cotoneaster	769	Mixed
349	Dogwood	816	Elm

Also, 6,250 perennials were shipped out to various parks.

The Civic Greenhouse experienced an extremely busy season. A total number of 2,280 flats (80 plants to a flat), 10,003 potted plants and 16 window boxes were set out in various parks and other departments for the 1958 season.

### SHAGANAPPI GOLF COURSE:

Despite much inclement weather, approximately 60,000 games of golf was played by ardent golfers during the '58 season. August was the best month when 12,572 people turned out, the best day being August 31st, with 595 golfers showing up to "tee off". The large membership enjoyed by this Golf Club is steadily increasing as more and more people are becoming interested in this sport.

The permanent greens were opened for play on May 17th. All 27 greens were renewed with ten pounds of seed per green during the first week in June. Fertilizing with Elephant Brand Fertilizer and Maloganite was carried out, plus treatment with chemical weed-killers, and thorough aerifying. To maintain healthy turf, aeration is essential, and the process actually encourages the roots of the grass to grow and spread more deeply. The greens came through the winter in good shape, and were kept in fair playing condition, however, due to the heavy golfing carried out this past season, the greens were not in as good a state as they should have been, due to lack of machinery.

## Shagana Golf Course (Cont'd.)

Approaches to the greens were top dressed aerified, and seeded. Three new Grass Tees were built and ground prepared for one more to be completed. These Tees have proven very satisfactory and greatly add to the appearance of the Course. A four-foot fence was erected along 12th Ave. for 26 St. S. W. to 33 St. S. W. Due to complaints received from residents in this immediate vicinity regarding damage to private property, this Department saw fit to erect a fence from approximately 25A St. to 24 St. S. W., about three hundred feet of this being sixteen feet high for additional protection. A Pitching Green was made in the rough adjoining the 5th and 6th Fairways of the Nine-Hole Course. This was used for practicing by a great many of our golfers.

## ST. GEORGE'S ISLAND AND ZOO:

Once again, this beauty spot had a very successful and busy year, and was visited by several thousand visitors from all parts of the world as well as this city. The presence of foreign and domestic animals, prehistoric models, and spacious picnic facilities are factors responsible for the attraction and fame of this beautiful Island. The floral displays were exceptionally attractive and when the plants were in full bloom, the park was certainly eye-appealing.

The playground section of this Island was a favourite spot for both the young and old, the wading pool being used extensively, and the playground equipment attracting many youngsters. The Bronks' Football Team who use a portion of this playground as their practice field, due to their clubhouse being situated at the entrance of the park, co-operated wholeheartedly in keeping the space allotted them clean.

Litter and waste still remains a problem, however, and it is the hope of this Department that extra waste receptacles and change of the public's attitude will tend to overcome this problem of litter.

A detailed report of activities of the Zoo has been submitted by the Curator, and the following is an excerpt:

"Almost the entire paving program was completed this past season. The remaining area in front and around the residence and various small area adjacent to the new building were gravelled. The parking areas around the park showed improvement, but still need a lot of work done on them.

The main items of new construction undertaken were a Moose Shelter; three small grottos for small mammals, canopy and entrance to men's restroom; pumphouse on south road; considerable fencing in old parking area; foundations completed, utilities brought in and plumbing roughed in for new tropical building; a new deer shelter was built at the west end of park. Minor construction and maintenance was also carried out, and general appreciation was expressed at the improvements.

With one exception we can describe 1958 as our best year with regard to exhibits. Losses were light and natural increase good. The exception noted above refers to several cases of Perfringens that occurred among the hooved stock. This is a soil-borne disease and was due to the fact that much of our grounds have been closely occupied for over twenty years. However, prompt action was taken by the veterinarian, and only six animals were lost. This year, the Zoo raised three Rheas to near adulthood which is something we had not been able to do before.

St. George's Isl and Zoo: (Cont'd.)

Additions by way of natural increase include: mouflon, aoudad, fallow deer, sika deer, silver fox, coypie, wolves, coyotes, lions, and monkeys. Some notable acquisitions made by way of purchase and exchange and donations include: mountain goat, red kangaroo, hedgehogs, chimpanzee, gelada baboons, tree kangaroo, sykes monkey, spot-nosed monkey, mongoose lemur, guanaco, otters, sumatran tiger, coscoroba swan, whooping swan, trumpeter, guan and various species of small birds. Some sixty shipments were received during the year, and nearly forty shipments sent away.

Some 103,000 people visited the Children's Zoo. No accidents to either visitor, staff or animals occurred. Visitors appeared very appreciative of the various features and to date, no complaints of any kind were made. Various minor changes were made in the buildings, etc. It must be pointed out here that it is in the nature of a rush program with adult animals the season is so much longer than baby animals and one can plan ahead, but with the Children's Zoo one has to assemble scores of animals at the end of May that were not even born a few months earlier. Regardless of buildings, a Children's Zoo without a suitable collection of young animals is like a car without an engine.

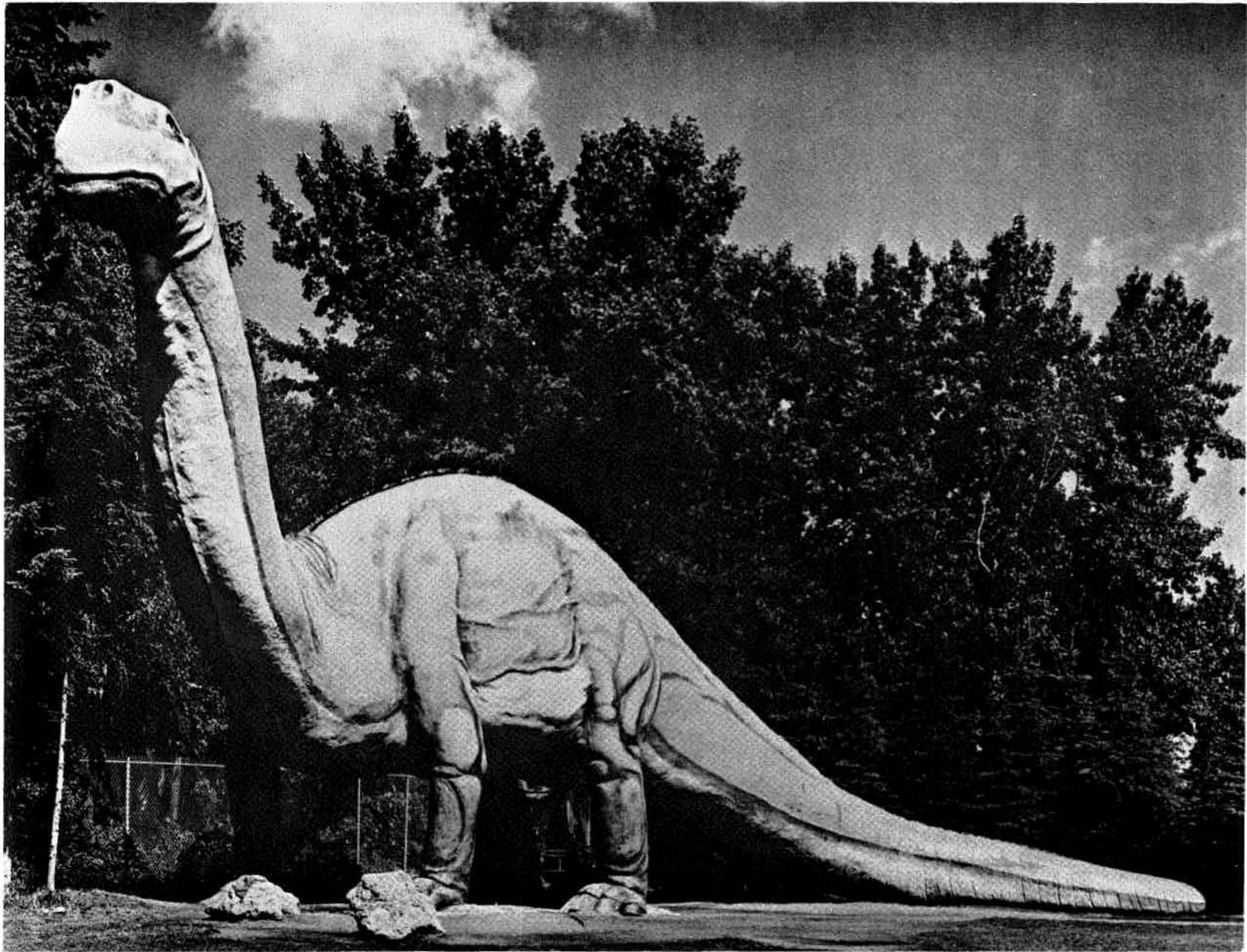
Educational Display #2 showing speeds of animals donated by the Calgary Power Co. Ltd., was installed and was well received. Program of installing accurate signs was continued and is nearly up-to-date. Fossil and Dinosaur Exhibits were well maintained, all either being painted or oiled by Mr. John Kanerva, whose excellent work in model building and reconstruction is still unsurpassed. For those who take a walk through the historic park, a total of 46 reconstructions which tell a story starting back about 230 million years ago, will be seen. New work in this branch included the finishing of a Tyrannosaurus; the start and completion of a new model - plateosarus; repairing and repainting all existing models; installation of new wire fencing in front of all models; asphalt surfaced paths in front of fences; commencement of renovation to Fossil House #1; and a revision of the paleontological section of the Zoo Guide Book.

Appreciation is deeply expressed to the Officers and Directors of the Calgary Zoological Society who have donated freely, their time and effort to promote the gardens. Also, all members of the Zoo staff put forth every effort and carried out their duties in an efficient and willing manner. Just as no report on publicity would be complete without reference to the Calgary Press, so no words can properly thank them. We feel especially fortunate with regard to our Zoo and the Editors, Reporters and Photographers. Finally, it only remains to thank all those who by their efforts have made the task of the Zoo staff such a pleasant one".

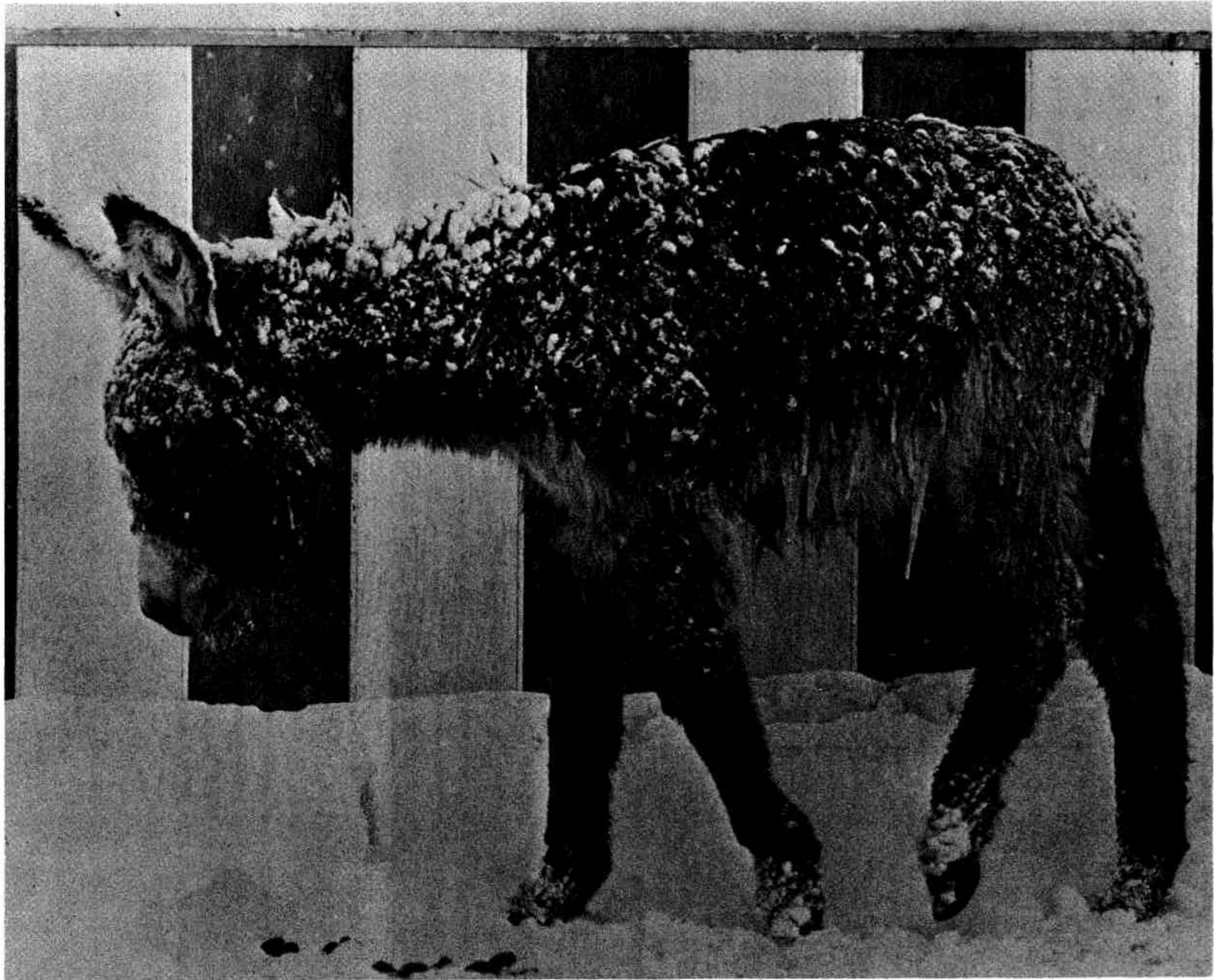
The following is an Inventory of exhibits as at December 31, 1958:

Primates (Monkeys, Baboons, Apes, Chimpanzees)

Guinea Baboon	2	Chimpanzees	1
Spider Monkeys	4	De Brassa	2
Gibbons	5	Rhesus	8
Ringtails	4	Macaque	2
Vervet	2	Brown Capuchin	2
White Faced Ringtail	2	Sykes	3
Japanese Red Face	2	Spot Nose	2
Wandaroo	2	Cotton Top Marmoset	1
Pig Tail	2	Squirrel Monkey	2
Barbary Ape	2	Drill Baboon	2
Mandrill Baboon	2	Anubis Baboon	2
Hamadryas Baboon	1	Mongoose Lemur	1



"Dinny" prominent figure of the Calgary Zoo on St. George's Island



Burro at the Children's portion of the Calgary Zoo

Inventory - Cont'd.)

Sea Lion	1		
<u>Cats</u>			
African Lions	4	Tigers Sumatran	3
Leopards	1	Pumas	2
Ocelots	2	Bobcats	2
Lynx	4		
<u>Bears</u>			
Polar Bears	2	Grizzly Bears	3
Kodiak Bears	2	Black Bears	3
Sun Bears	2		
<u>Wolves, Dogs, Coyotes</u>			
Timber wolves	2	Coytoes	2
Dingos	2		
<u>Figs</u>			
Peccary Figs	3		
<u>Kangaroos</u>			
Great Red Kangaroo	2	Wallaroo	2
Tree Kangaroo	1		
<u>Foxes</u>			
Blue Artic	1	Silver	6
Red	3	Grey	6
Artic White	4		
<u>Skunks</u>			
Canadian	9	Spotted	1
<u>Ungulates</u>			
Moose	4	Elk Canadian	2
Asiatic	1	Virginia Deer	8
Mule Deer	5	B. C. Black	3
White Fallow	3	Japanese (Sika)	8
Black Fallow	5	Mouflon	6
Thar	2	Aoudad	2
Nubian Goat	8	Goats	8
Rocky Mountain Goat	1	Llama	1
Guaraco	1	Buffalo	1
<u>Large Rodents</u>			
Beavers	1	Cavys	3
Chinchillas	4	Badgers	7
Coypu	8	Guinea Figs	10
Rabbits	10	Prairie Dogs	4
Wombat	1	Agouti	3
Pacas	2	Porcupine African	1
Porcupine Asiatic	1	Porcupine Canadian	7
<u>Marmots</u>			
Dakota marmot	1	Woodchuck	1

Inventory (Zoo - 'd.)Small Carnivores

Opposums	4
Armadillo	3
Pole Cat	2
Pine Martin	2
Jargurundi	2
Civet Cat Javan	1
Wolverine	5
Hedge Hogs	3

Cacomistle	2
Ferret	2
Kinkajou	2
Fisher	2
Civet Cat Indian	1
Coati Mundi	5
Otters	2

Small Rodents

Sandy Hooded Rats	10
White Hooded Rats	10
Brown Hamsters	1
Grey Squirrels	2
Black Squirrels	2
Kangaroo Rats	3

Black Hooded Rats	10
Pack Rat	1
Golden Mantled Ground Squirrel	1
Richardson Ground Squirrel	1
Red Pine Squirrels	2
Turtles	10

Giant Ant Eater

	1
--	---

Fish

Angel Fish	1
Black Lace Angel Fish	2
Blue Acara	13
Gypsy	5
Neon Tetras	18
Pearl Gourami	8
Red Rasbora	1
Swordtail Red	30
Swordtail Tuxedo	2
White Cloud Mountain Fish	18
Gold Fish	8

Black Angel Fish	4
Black Tetras	12
Cherry Barb	1
Leopard Catfish	1
Panchax	2
Platy	19
Suckermouth Catfish	4
Swordtail Green	2
Tiger Barb	9
Zebra	12

Birds

Swainson Hawk	2
Golden Eagles	6
Red-Tailed Hawks	11
Snowy Owls	2
Crows (1 albino)	4
Barred Owl	1
Short-eared Owl	3
Burrowing Owl	2
Red Shouldered Hawk	1
Marsh Hawk	1
Pigeon Hawk	1
Blue Peafowl	15
Black-shouldered Peafowl	7
Pearl Guinea Fowl	3
Tumpeters	2
King Vulture	2
South American Condor	1
Golden Headed Caracaras	3
Black Cochins Bantam	2
Black Rose Comb Bantam	1
Cackling Goose	4

Red Tailed Hawk	8
Bald Eagles	3
Great Horned Owl	5
Ravens	2
Magpie	1
Long-eared Owl	1
Screech Owl	1
Barn Owl	3
Sparrow Hawk	5
Goshawk	1
Long Legged Hawk	1
White Peafowl	2
Wild Turkeys	6
White Guinea Fowl	3
Guan	1
Turkey Vulture	1
Black Vulture	2
Game Bantams	2
Magpie Goose	1
Ross Goose	2
Mallards	19



Inventory - Cont'd.)

Birds (Cont'd.)

East Indian Black Duck	1	Baldpate	6
Pintail	5	Redhead	1
Wood Duck	8	Mandarin Duck	4
English White Duck	1	Coots	4
Glaucous-winged Gull	1	Ring-billed Gull	3
Whooping swans	2	Black Swans	5
Whistling Swans	3	Grey-leg Geese	2
White-fronted Geese (American)	2	White -fronted Geese (European)	2
Blue Geese	6	Snow Geese	9
Egyptian Geese	4	Canada Geese	16
Sevastopol Geese	1	White Chinese Geese	2
Brown African Geese	1	Pilgrim	2
Mute Swans	8	White Pekin Duck	2
White Muscovy Duck	2	Roeun Duck	4
Black Muscovy Duck	2	Chir Pheasant	2
Manchurian Pheasant	3	Swinhoe Pheasant	2
White-crested Pheasant	3	Silver Pheasant	6
Melanistic Mutant Pheasant	4	Formosan Pheasant	3
Ringneck Pheasant	6	Mongolian "	3
Black-necked Pheasant	3	Versicolor "	3
White Ring-necked Pheasant	3	Reeves Pheasant	4
Golden Pheasant	14	Chukar Partridge	5
Hungarian Partridge	1	Lady Amherst	5
Sandhill Cranes	3	White Pelicans	3
Double-crested Cormorant	1	Stellars Jay	5
Meadowlark	1	Robin	2
English Blackbird	3	Flicker	1
Bronzed Grackles	5	Mourning Doves	1
Red-winged Blackbirds	2	White Doves	2
Band-tailed Pigeons	2	Ring Doves	4
Black-crowned Night Heron	4	California Quail	5
Yellow-head Blackbirds	2	Pope Cardinal	1
Japanese Nightingale	1	American "	1
Brewers Blackbirds	2	Cowbird	1
Java Sparrow	5	Cirl Buntings	2
Bohemian Waxwings	4	Ortolan "	2
Short toed Larks	2	Reed	2
Stonessparrow	2	Liskins	2
Hedgesparrows	2	Bramble Finch	2
English Goldfinch	2	English Greenfinch	2
English Chaffinch	2	English Bullfinch	2
White crowned sparrows	2	Cedar Waxwings	3
Crossbills	6	Pine Siskin	1
Evening Grosbeaks	3	Purple Finch	6
Towhees	4	Fox Sparrows	5
White-crowned sparrows	3	Oregon Juncos	3
Golden-crowned sparrows	2	Dicksiccel	2
Hermit Thrush	1	Canaries	30
Yellow Tanagers	2	Blue Tanagers	2
Bearded Orioles	2	Ox-blood Tanagers	2
Yellow-caped Coronitas	1	Song Sparrow	2
Peruvian Ground Doves	2	Lincoln's Sparrow	4
Tortilitas Ground Doves	2	Leconte's "	1

Inventory (Zoo - cont'd.)

Birds (Cont'd.)

Thick-billed Sparrow	1	Chipping Sparrow	2
Savannah Sparrow	4	Cut-throat Finch	6
Safron Finch	5	Spice Finch	1
Napolean Weaver	3	Blood-billed Weaver	3
Black-billed Weaver	2	Black-headed Nun	4
California Linnet	1	European Linnet	1
Bobwhite Quail	4	Button Quail	4
Bichena's Finch	1	Diamond Finch	1
Shaft-tailed Finch	2	Lavender Finch	2
Blood Finch	2	Zebra Finch grey	2
Zebra Finch fawn	1	Zebra Finch white	1
Green Finch	1	Fire Finch	2
Society Finch	3	Strawberry Finch	4
Orange-breasted Finch	4	Tri-colored Nun	1
Orange-cheeked Waxbill	1	St. Helena Waxbill	2
Pintail Wydak	1	Pheas	3
Cassowary	1	Emus	2
Ostrich	2	European Storks	2
Toucanette	1	Penguins	2
Sulphur-crested Cockatoo	1	Military Macaw	1
Scarlet Macaw	1	Cockateels	5
Peach-faced Love birds	2	Budgerigars	40
King Pigeons	2	White Fantailed Pigeons	4
Blue Fantailed Pigeons	1	Jacobin Pigeons	1
Clean-leg Tumbler Pigeons	4	Muffed Tumbler Pigeons	1
Homer Pigeons	4	Magpie Pigeons	1
Swallow Pigeons	5	Carneau Pigeons	2
Miscellaneous Pigeons	7		

CEMETERIES:

A satisfactory year was experienced in this branch of the Department. Although there was not too much construction carried out, steady improvements are continually being made.

As has been the custom in previous years, memorial services held by several Service Clubs -- American Womens' Association, The B.P.O. Elks, the I. O.O.F. and the War Veterans' Association, and many others. The staff at the cemeteries gave their assistance in patrolling the roads, directing traffic and raising and lowering the flags as the various ceremonies required.

The following are reports from the Cemeteries under the sponsorship of the City.

Queen's Park Cemetery was kept in excellent condition with the usual maintenance being carried out. The season was very good for growth and an exceptional display of bloom was the result. Hail was no problem this year and no early killing frost was in evidence. A number of trees as replacements and some perennials were planted. All in all, no adverse criticism was received from plot owners of the conditions or services rendered.

Commencement was made on the long required paving, and a substantial amount of permanent fencing was erected. The main water valve which was situated outside of the property was brought into a new concrete manhole on the inside.



## Cemeteries (Cont'd.)

A considerable amount of high ground was cut down to raise some of the bottom land, and a couch grass infested area of some three acres was treated with chemical weed-killer. Approximately 450 feet of concrete curb was laid to protect graves from cars. These and many other minor construction jobs were carried out, and have thus greatly improved this cemetery, which has now become the main burial ground for the City of Calgary.

There was a total of 866 burials made during the season.

Union Cemetery received its usual maintenance also. The floral display was excellent. The grass was watered and cut regularly, borders and shrubs pruned and cleaned up, annual beds cultivated and planted.

Construction included the gravelling and grading of roads which added to the appearance of this area; the completion of a new fence along McLeod Trail; and new gates put on at the north entrance. Water lines were also laid in several sections. Due to vandalism, one hundred and twenty gravestones had to be reset.

The burials in the Union Cemetery totalled 703 for 1958.

Burnsland and Field of Honour had general maintenance carried out on beds and borders, and all areas were kept watered and the grass cut. Two new blocks were laid out in the Field of Honour portion.

Improvements included the erection of a chainlink fence on the West side of the cemetery, and also new gates at the north entrance. Many new water lines were laid.

286 burials were made in this Cemetery in 1958.

St. Mary's Cemetery received no new construction during the past season, other than the hill on the north end being bulldozed down to allow cars to turn. This has proven to be an improvement to the appearance of the area. The floral display was excellent, and the general maintenance improved the ground considerably.

A total of 259 burials were made for the year.

Chinese Cemetery saw no new construction, however, the usual maintenance of cleaning up, etc., was in evidence. The interments for the year numbered 26.

## RECOMMENDATIONS:

One of the foremost objectives of any park board is to strive for the ornamentation and beautification of the City, thus relieving the monotony of pavement and drab buildings, and this can only be done by beautifying the boulevards, setting out small parks and playgrounds through the city, planting trees, etc. In view of the rapid growth of City, I would like to suggest several projects which it is hoped our attention can be given to in the forthcoming season.

It is felt that a speed zone should be set up at the entrance of 4th St. N.W. at Queen's Park Cemetery, along with a well marked crosswalk. This is at present a very dangerous crossing, especially for many aged people who visit this beautiful resting place of their friends and loved ones.

Recommendations ( d.)

Numerous complaints have been received about the water pipes which are laying half way down a bank in this burial ground, fully exposed to view with water flowing from them. I would strongly recommend that the Engineers' Department remedy this situation by bringing these pipes down into the water channel at the bottom of the hill.

With regard to parks, I would recommend the following: There is a great need for a fence to be erected around the triangle bed at 8 St. S. W. and Royal Avenue., to protect this area from being tramped on; the paths in Memorial Park should be macadamized or top dressed with red shale; additional space provided for deet, etc. at the Calgary Zoo. A location below the Tom Campbell Sign is suggested as an ideal location. Parking at Riley Park which is becoming a problem, should be considered, and it is suggested that the boulevard on the West end of the Park at 12 St. be reduced for such parking purposes.

It is also recommended that a building be erected near the first Tee at the Municipal Golf Course, which could be used as a combination Pro-Shop, Caddy Cart Storage Room and a one-car garage. The present Pro-Shop is too small and too far away from the first Tee. Practically all golfers now use Caddy Carts and most of them like to leave their carts at the Course where they are playing, and at present, there is not enough storage space available. The present Garage is very old and delapidated. With a garage incorporated in the building recommended, this old garage could be demolished and the space used for parking.

The road leading to the Reader Rock Garden should be paved, or at least graded and oiled to keep the dust settled, and also some restroom facilities installed. The way to the Rock Gardens should be closed at least on weekends and evenings for cars, as this is now quite dangerous, as only one car can drive up or down.

COURTESIES:

At this point, I would like to express my deep appreciation and thanks to all who have co-operated so heartily with the Parks Department through the season, and to the Radio Stations, the Press, and CHCT-TV, for their excellent coverage and interest in the parks system during 1958.

To the Service Clubs, namely the Kinsmen and Kiwanis Clubs, who have continually lent their support in so many civic enterprizes, we owe a depth of gratitude. Their public spirit is to be highly commended.

Mrs. Maude Riley, President of the Alberta Council of Child and Family Welfare is also thanked for her constant interest and welfare of the children of this City and Alberta. Throughout the years, she has never failed this Department or the youngsters, in supplying them with prizes and shields for the various activities carried out in the yearly recreation program.

In Conclusion, I would personally like to thank the Mayor, Commissioners, City Council and each and every member of the Parks Department, who so willingly co-operated in making the Parks and Recreation Department one of the best in Western Canada.

Respectfully submitted,



A. Munro, Superintendent.

Mr. A. M.  
Superintendent  
Parks, Cemeteries & Recreation

Dear Sir:

The presentation of the 1958 Report for the Recreational and Mechanical divisions of the Calgary Parks Department give me a measure of satisfaction yet some degree of concern as we review the recreational activities of the past year.

A year and three months ago it was decided to place the Mechanical section of the department under the direction of your Director of Recreation. The Mechanical sections include Repair Shop, Plumbing Shop, Water Service Installations, Building Repair & Maintenance, Departmental Store, with the Recreational section of Playgrounds, and Centres, Swim Pools, Ice Rinks, Stadium and Sport Fields and Playground Construction Crew.

The success of the venture must be left to the judgement of others, although I frequently wonder if either section is receiving the proper supervision.

The efficiency of Mr. Foster and Mr. Jonathon make it possible to operate the Mechanical Division with three hours or less of our time being spent in supervision at Manchester. Mr. Houghton and Mr. Taylor with the assistance of the Area Supervisors carry a great load in the Recreational programming. With Jack Rowland accepting the greater responsibility of Construction of Playground Areas and Sport field Maintenance including a regular inspection of Playground apparatus and assuring safe operation.

To correctly present this report, I will do so in two sections,  
Section A "Public Recreation Program and facilities".  
Section B "The Mechanical Operations & Equipment Maintenance".

The main sections will be supplemented by reports from the section leaders, copies of which are attached hereto.

Section A                      Recreation, Where, What and How

The growth of our city makes it imperative that development of new playfields, playgrounds, tot lots and community recreation areas and centres be developed rapidly.

A considerable amount of public money is being used to assist the community associations in building facilities where a public program may be conducted, and one large development company, has adopted a policy of supplying playground apparatus whilst the building program is progressing thus avoiding one or two years of delay in the city providing this service. Tot lots for kiddies are therefore becoming a more common facility in new residential areas.

Where Do the People Play?

In co-operation with several community clubs, the division has planned and operated an extensive winter recreation program, although we must admit that there has been a serious set back due to change in policy.

Early in 1958 the City Commissioners requested that local community groups must be responsible for leadership and supervision in buildings where the division conducted a program of activities, and to assist in meeting building costs if extra activities were provided.

## Where Do the People Play? (Cont'd.)

Community Associations soon ran into difficulty in obtaining the service of capable people, who could devote work on a voluntary basis as centre supervisor, in fact in some instances the same person worked each week for the entire eight months that the program was carried out being anywhere from 128 hours to 256 hours for the season.

Other communities found it impossible to obtain leaders, and therefore the program had to be discontinued and the youth of the area suffering as a result.

This situation developed as a result of the reduction in budget for program leadership, and the loss of trained leaders who had worked as part-time employees in the past two years.

At this point I would recommend that in the winter of 59-60 we arrange that the area supervisor organize a program at one school or centre only, each of the five evenings per week, October through May. During 1958-59 season one supervisor had four, and five centres open in one evening, making it impossible to give satisfactory supervision inspite of the request of the communities.

I therefore feel we must go back to a policy of keeping the Area Supervisor in one centre for the whole evening, supervising programs and building. It was one promise to the School Board, that we would have a paid supervisor on duty as long as we used the school premises.

The effectiveness of such a program would be felt in that one section of each district would be served only once per week, using five separate school buildings.

We are constantly being faced with the problem of providing additional sport fields, and the demands for additional baseball diamonds suitable for senior games is becoming more urgent. This is brought about as a result of the growth of youngsters who have been drawn into the Calgary Boy's Baseball program. Areas of a minimum of four hundred and fifty feet square are required for this purpose, and such cannot be built on areas less than two blocks wide. This will result in establishing such fields on large park areas or on the flight paths of the air ports.

Flight paths are not available for building sights therefore I feel that they could well be allocated for sports purposes.

With the rapid expansion of the city it is hoped that track and field facilities will be prepared in conjunction with the school authorities, as the high school students are the persons mostly interested in this type of activities in fact only two other sponsoring groups used the Mewata track and field equipment for such sports.

## Personnel

The nature of our work caused many staff members to seek employment in other centres. Many members of the staff obtain training and experience at Calgary, then leave to obtain administrative positions in smaller towns, resulting in a rapid turn over of trained employees. In the past three years we have lost for various reasons, twelve staff supervisors. These professionally trained persons are difficult to replace, in fact, we have at present only two trained Area Supervisors where six are required to do a satisfactory job.

## Personnel (cont'd.)

Three persons returned to university, three became Recreation Directors in smaller centres, two took higher paid positions, three decided to tour Europe to gain more experience, one leaving to be married.

In the face of these problems, the division shows an active participation of 147,325, and a registered attendance of 104,070 persons during the eight month period, as shown in the report of Mr. J. R. Houghton.

At our summer playgrounds 65,650 children between 6 and 15 years of age participated 148,551 times during the months of July and August. Most of the playgrounds operating either two or three days per week in an endeavour to cover more of the city.

The operation of split centres is frowned upon, as children get mixed up as to the days when they should attend. Therefore if budget is restricted, children will have to visit playgrounds at greater distances from their home, or be denied this activity.

To conduct a satisfactory program during the fall and winter of 1959-60 it will be necessary to employ six area supervisors to cover the recreation centres rather than the four used in 1958-59. Of this group four will be new employees if available.

The present staff members have taken a very active part in professional groups with which they are associated, several members attended the semi-annual and the annual meeting of the Alberta Recreation. The annual meeting was held in Banff and was open to lay and professional delegates. Persons attended from towns and cities in Alberta, Saskatchewan and Manitoba. The meeting provided an opportunity to interchange ideas which will benefit the employees and the City of Calgary as a whole.

C.A.H.P.E.R. Several members of the Recreation Division are active members of this group and listed on the Professional Registry of the Canadian Association of Health, Physical Education and Recreation. This is a Dominion-wide organization.

Playground Supervisors' School: Immediately prior to the opening of our playground season two schools were held, one of two weeks duration in the middle of June and a condensed course early in July, for the purpose of instructing applicants for the positions of Playground Supervisors in their duties. The longer course is usually attended by University undergraduates, and the short course by Grade 12 students who are unable to be present earlier due to departmental examinations. Appreciation is extended to local instructors for their volunteer services on these occasions.

Junior Leaders' Course: During Christmas week, a course for boys and girls 15 to 17 years of age was held. The theme being to "Teach how to Teach." It is felt that great value is derived, not only by the students attending, but by the City as a whole, because many successful graduates have volunteered their services to the Recreation Division in a Junior Leader capacity and their offers taken advantage of. Candidates successfully completing this course at a specified level, were awarded crests.

It is the intention of the Recreation Division to hold a similar course during Easter week of 1959.



Staff Meetings: The holding of monthly staff meetings and part-time employees was instituted during the year 1958, and on these occasions, held Saturday mornings in the Mewata Recreation Hut, workshops, group discussion, and games are usually held, together with talks by outstanding speakers. The attendance has averaged round 60 and the results have been beyond expectations. Speakers included: Mr. A. R. Smith, M.P., Mayor D.H. Mackay, Ald. Mrs. I. Stevens, Dr. F. H. Tyler, Director, Council of Community Services, and Miss E. McFarland, Supervisor of the Community Recreation Bureau, Provincial Government.

Conferences: Representatives of the Recreation Division attended short conferences held under the auspices of the following organizations:

Council of Community Services,  
Central Volunteer Bureau,  
Canadian Mental Health Association.

Panels & Talks: The Recreation staff have been fortunate in being asked to appear on various panels during the year at Community centres, and over the radio and T.V. Thanks are extended to all these organizations, particularly radio station CKXL for allowing tapes to be made of fourteen talks during the season, which were broadcast at suitable intervals, many times during the periods designated by the material contained in the addresses, also to CHCT-TV for publicity on many sporting events and award presentations, together with opportunities to appear on "Our Town."

#### Personnel Cont'd.

Staff members volunteered as officials at the track meets of the Junior and Senior High Schools, also surband schools and Mount Royal College.

#### General

Your director is the departmental representative on the Civic Equipment Committee and also the Engineering Co-ordinating committee and acts in an advisory capacity to the Calgary Community Recreation Ass'n.

#### Band Contests

The annual Jubilee Band Contest was conducted under somewhat adverse conditions. The Sunday opened with heavy rains, but thru the co-operation of Mr. L. Bessell of the Public School Board, we were permitted to use the Auditorium of the Queen Elizabeth High School for the afternoon contest. The auditorium was filled to capacity and the contestants kept the spectators thrilled throughout the afternoon.

By evening time the marching contests was held at the Stadium and some four thousand persons attended and saw some spectacular displays of marching, baton twirling and playing.

A sincere appreciation is expressed to the members of the contest committee which is made up of representatives of the various bands in the city of Calgary. These members meet monthly throughout the year to plan the activities, which also includes a slow melody competition for boys and girls, this event is held in the fall of the year.

Adjudicators for the events included Bands, Captain T.M. Mcleod, Marching and Instrumental Solos (reeds) William Garnett, Cornets, Trumpets and trombones Mr. Nelson Weir.

Each of these gentlemen rendered this service without charge.

## Section B.

Mechanical Divisions operations include,

1. Supervision of the Repair Shop at which all departmental hand and power tools are serviced and maintained. Farm type tractors, grave digging machines, ditching equipment, multiple unit lawn mowers, hand and motor powered grass cutting units, spraying units, thousands of feet of hose pipe of various sizes, and a variety of sprinklers are assembled or repaired here.

A goodly amount of the equipment used in the recreation program is manufactured in our own plant and the maintenance and repairs to all athletic supplies is done there.

This shop also does the repair work on the motor powered pumps gasoline driven generators and small internal combustion engines, for other city departments.

2. The plumbing division is responsible for the design and installation of the water services throughout the park system, and some twenty thousand of new water service has been installed in the newly developed areas.

The satisfactory maintenance of the four swimming pools, the artificial ice rink, and twelve wading pools is done by this section, and the repairs to the forty-four departmental buildings is supervised by the plumbing foreman.

Plumbing maintenance of the Zoological Society buildings, The New Electric Light Dept. building, and the entire group in the Manchester compound including the City Garage and Engineers district headquarters is handled through this division.

The building repairs and alterations is supervised by our own mechanical division although the actual carpenter work is done by the Engineers Dept. carpenters.

During 1958 considerable renovation was done at the new Stanley Park caretakers cottagen and rest rooms.

Four new buildings were erected two of which were of Pan Abode design and are used as the headquarters in the districts of Highwood and Westmount Boulevard. These also provide public rest rooms in the areas.

Considerable exterior painting was done to the departmental buildings with the intention to carry out a portion each year on a possible five year plan. The chief areas covered were at St. George's Island caretakers lodge, and the Mewata Recreation Office, also the summer shelters at Prince's Island and St. George's.

Much of the work by the division is accomplished by the close co-operation of the other city departments especially the Blacksmith shop and the Carpenters shop. This co-operation is greatly appreciated.

### REPAIR SHOP - O. Forster

One complete year has now passed since the operation of the repair shop was placed under the control of the Director of Recreation and several new developments have taken place.

## Repair Shop (Cont)

The purchase of a Toro Park master cutting unit having a cutting swath of ten feet now makes it possible to cut a full soccer field in less than two hours, and therefore the large park areas can each be cut in less than seven hours of operation. This will reduce the amount of men and machines of small capacity necessary to service the park areas.

For the first year in our existence, we have established a rental system of machinery to the respective districts and sections of the department. It is expected that a fund will thus be developed to provide a replacement pool for worn out equipment, without having to ask for capital funds to purchase replacement equipment.

The purchase of Gravelly tractors with attachment for snow removal, weed cutting, weed and insect spraying, and rotary grass cutting units, has made our fleet of movers more adaptable for year round operations.

These units are capable of removing snow from our commercial rinks without it being necessary to call out tractor units at week ends. One Gravelly tractor being located at each commercial rink all winter and operated by the regular rink maintenance staff when required.

New units were purchased to help in maintaining the golf course and satisfactory reports have been made on the condition of greens and fairways.

Modifications were necessary in the shop area to provide lunch room facilities, paint shop, and oil storage. The fire inspection bureau advised that gasoline and oils must be stored in a fire proof area, therefore a new oil storage area was installed in the southeast corner of the warehouse area and fabricated from concrete blocks with fire proof ceiling.

The lunch room was constructed in the northeast corner of the warehouse and heated with steam from the main steam plant.

Consideration will have to be given in the matter of staff and it would be advisable to obtain young men willing to learn in the mechanical field in this specialized line of park maintenance equipment. The City departments now send all their small motor units to us as does the City School Board.

The Engineers Department have indicated that the space occupied by the parks shop, will soon be required for engineers own use. Should this occur, I respectfully suggest that a new shop be built with a second story facility for the recreation division.

Such a plan would consolidate the offices of the Director of Recreational and Mechanical Division, thus avoiding the travel between Mewata Stadium, Manchester Shops and the City Hall. The public and City departments find it difficult to contact your director, between these three locations.

A further introduction, was the stores section located at the Manchester Shop. This section maintains a complete check of machine parts used in the maintenance of mechanical units. A control of all tools and equipment issued to the district foremen, Cemeteries and golf course.

The supplies and equipment used for our Recreational program are also controlled by the storekeeper, thus giving us a full control of the departmental inventory of both expendable materials and regular stock. Mr. A. Kaynath is responsible for the operation of our electrical and sign section.

## Repair Shop (Cont'd)

At this shop all plastic signs are made and engraved for the Zoo and other locations. All wooden signs are prepared and painted either by hand or silk sheen process.

Maintenance of the recreational division public address systems are also carried out by this employee and all keys required throughout the city service are cut.

Mr. Kaynath is also the departmental representative on the City wide Communications Committee.

## PLUMBING DIVISION - S. Jonathan

The following is a summary of the work done by the Plumbing Division of the Parks Department for the year 1958.

Maintenance work has increased considerably, owing to new plumbing in pools and buildings coming off warranty. There are also water services, plumbing and heating systems in operation. This Division carried out maintenance plumbing for the Engineers, Electric Light, Stores, Garage and Health Departments.

New water services were laid in Collingwood, Harvie Park, Meadowlark Park, Meadowview, Mewata Bridge Cloverleafs, Hillside east of Crippled Childrens' Hospital, Parkdale Community Grounds, Simpson-Sears Greenbelt, South Calgary Park, Sunnyside Boulevard, and many, many, more.

Water services were extended and improved at Burnsland, Union, Queen's Park, St. Mary's Cemeteries; Reader Rock Garden; St. George's Island; St. Patrick's Island, Municipal Golf Course; and water facilities laid to a number of Community Buildings, plus the Zoo Exhibits building. Heating systems were installed at Elbow Park restrooms, Greenhouse outside frames, Riley Park Garage.

Major work for the season included: a new wading pool at Parkdale Community which was built by contract with this Division handling the installations of plumbing and also supervising the construction; the Calgary Trades and Labour of Council donated a Marble drinking fountain to the citizens to be erected in Riley Park in the spring; a quick coupling valve type sprinkler which has proven very satisfactory, was laid in the grass area west of the caretaker's residence in St. George's Island, on two fairways at the Golf Course, and on a portion of Harvie Park (this system reduces the amount of hose and labour required, but is more expensive and requires more water pressure); repairing and repainted of several buildings and offices was also carried out as this is under the Supervision of the Plumbing Division.

## Construction Section - J. Rowland.

The construction section is detailed to repair erect and dismantle the fifty-four hockey rinks each season, to erect and maintain the play apparatus in the childrens playgrounds and to inspect and repair equipment.

During the winter months this crew are responsible for the flooding in of one hundred thirty sheets of ice around the city.

Eight new sets of playground equipment were installed during the past years the locations are shown on the tabulation at the end of this report.

Appreciations

The completion of the above mentioned tasks would be impossible without the complete support of the Parks Superintendent, and the administrative staff of the department, in fact the whole staff of the department and many other civic officials.

We sincerely express our appreciation to the Press, Radio and Television stations for the splendid support in publicising our programs from time to time.

And to the great number of volunteers who assist from time to time are heartily thanked for all their support.

Respectfully submitted,

W. Garnett  
Director Recreation and Mechanical Divisions.

## PLAYGROUND AND RECREATION CENTRES

In submitting this report, it is difficult to make a comparison with previous years, due to reductions in staff and changes in policy instituted by the Recreation Division, but it is fair to say, generally speaking, that the operations of Playgrounds and Recreation Centres in the year 1958 can be classified as fairly successful. The method of operating the Recreation Centres, particularly during the fall months, depended to a great extent on volunteer leadership provided by the members of Community Home and School Associations. While, naturally, the functioning of recreation in some centers suffered due to inexperienced aid, sincere appreciation must be extended to many public spirited citizens who gave their time and energy to act as Center Supervisors on a volunteer basis. Further details will appear later in this report.

As in other years, it is felt that a great deal of success in the City Recreation program depends on the close co-operation of allied associations, School Board authorities, press, radio and television. This has certainly been forthcoming and during 1958, many meetings, discussion groups, radio panels, and television broadcasts, with the resultant exchange of ideas proving of mutual benefit, were attended. Some idea of the variety of work undertaking can be appreciated by the following capsule reports:

### ATHLETICS:

**Student Nurses Organization:** For the fourth successive year, advice and assistance were provided in preparing and conducting an inter-hospital track and field meet, swimming meet, and fastball tournament.

**United Scottish Games Association:** Acted as Director of track and field events for the Annual Highland Games, but this event was rained out.

**British Empire Games Trials:** In conjunction with the Calgary Olympic Club, and the Booster Club, the supervisors assisted in these trials, officiating at the track and field eliminations at Mewata Stadium, and the diving and swimming events at Bowview Swimming Pool.

**Provincial Track Meet:** Again assisted in acting as starter for the Provincial track and field championships, this year.

**Hockey:** As Registrar of the Alberta Amateur Hockey Association was able to closely co-operate with the Calgary Community Recreation Association, Bankers, Petroleum, Chartered Accountants, Church, and other leagues, which resulted in the smooth functioning of all divisions, i.e., tiny mite, bantam, midget, juvenile, junior and intermediate.

**Seminar:** During the current year, a seminar on "Social Planning in a Growing Community" was attended. This was held weekly for three months in Mount Royal College, and on one occasion lectured on the subject of "Recreation". For University purposes this course awarded two credits.

### RECREATION CENTRES:

As intimated in the opening paragraph of this report, budget restrictions necessitated changes of policy, the major one being the opening of winter activities in various communities only on request and with the understanding that centre supervisors would be provided on a volunteer basis by members of the Community or Home and School Associations affected. This enabled permanent staff employees to operate two or more schools an evening in the districts under their jurisdiction. I reiterate the appreciation of the Recreation Centres for the services rendered by

Recreation Centres (cont'd.)

these volunteers, which certainly lived up to expectations, but feel constrained to report that it is felt a more successful program can be introduced if the Area Supervisors limited their evening sessions to one or two locations, thus enabling them to be in closer contact, not only with the part time leaders employed by the City, but with the boys and girls, as well as adults taking part in the activities provided.

Recreation Centres - January to May, 1958. 89,029 Calgarians participate in the various recreation centres.

Activities were conducted in 30 schools, 3 community halls, the Nurses' Residence, Calgary General Hospital, Mountview Home, and 2 private homes. Leadership was provided by 33 Community Recreation Leaders, 95 part time activity leaders, 26 adult volunteers and 34 qualified junior leaders.

Recreation Centres - October to December, 1958. 58,296 Calgarians participated in our centre

activities during the Fall sessions, 31 schools, 12 community halls, The Sacred Heart Convent, The Hebrew School, and the Nurses' Residence, Calgary General Hospital, being used for this purpose. Co-operative programs were conducted with the St. John's Ambulance Corps, (First Aid). Christmas parties in virtually every centre concluded the season.

Regulations require pre-school children and 6 - 8 year olds to attend centres prior to supper, 9 - 12 year classes from seven to eight p.m. 13 - 15 years from eight to nine p.m. 16 years and over, including adults, from nine to eleven o'clock.

1959 Composite Activity Participation

	<u>Spring</u>	<u>Fall</u>
Volleyball	6,517	4,129
Basketball	6,902	2,820
Table Tennis	3,014	2,067
Tumbling & Vaulting	19,793	11,358
Boxing	165	1,012
Wrestling	331	230
Group Games	20,369	10,629
Badminton	5,212	3,962
Ladies keep trim	4,795	2,228
Mens' Conditioning		53
Square Dancing	1,030	2,749
Social Dancing	2,962	600
Tap Dancing	3,532	155
Rhythmics & Music	513	1,747
Leathercraft	1,563	800
Coppercraft	6,671	4,412
Model Building	166	230
Painting		430
Sewing	304	326
Pre-School	1,416	1,187
Special Events	755	1,732
First Aid	523	876
Craft, Special	337	1,263
Puppetry	465	274
Public Speaking & Drama	276	1,717
Drum Majorettes	735	837
Floor Hockey	683	473
Total Participation	89,029	58,296
Total Attendance	63,899	40,171

1959 Composite Activity Participation (Cont'd.)

Grand Total - Participation, 147,325  
Attendance 104,070

Recreation Week: Immediately prior to the conclusion of our season's activities a very successful Recreation Week was held April 21st to 26th. Activities included a Tournament night, closing Demonstrations for the North and South districts, Senior Community Badminton Championships, doubles, an Open House by the Golden Age Club, and Junior Community Badminton Championships, doubles. Large and enthusiastic audiences were on hand on each occasion, and I cannot let this opportunity pass without extending our sincere thanks to Mrs Gertrude Dimple, who was responsible for the extremely entertaining evening provided by the Senior Citizens of Calgary.

PLAYGROUNDS

Again caused by budget requirements, the Recreation Division experimented with the opening of playgrounds two and three days a week instead of the customary five days, in an endeavour to place our facilities at the disposal of children in the widely expanded areas of the City of Calgary. While this venture met with a certain amount of success it is felt, and recommended, that in 1959, we return to a five days per week program at any playgrounds opened. Undoubtedly this will reduce the number compared with other years, but it is found that children lose interest if they can only go out two or three days a week to a specified site for their summer program. It is hoped that every effort will be made to increase the budget allotment for recreation during the year 1959.

Attendance & Participation by Playgrounds:

	Weeks Open	Days Per Week	Total Attendance	Average Weekly Attendance	Total Participation	Average Weekly Participation
Banff Trail	8	2	966	121	2,763	346
Briar Hill Comm.	8	3	2,051	257	3,246	406
Briar Hill School	8	2	1,285	161	2,324	291
Bridgeland	5	2	287	57	744	149
Cambrian Heights	7	2	943	135	1,521	360
Capitol Hill	8	3	2,124	266	6,186	773
Chief Crowfoot	8	2	1,274	159	2,845	356
Colonel Walker	8	5	1,300	288	4,382	578
Colonel Sanders	7	3	1,362	195	2,899	414
Connaught	6	2	431	72	1,086	181
Crescent park	7	2	966	138	1,971	282
Currie	7	3	1,616	231	3,932	562
Glengarry Park	8	5	1,816	227	5,100	638
Highwood	7	3	1,901	272	4,762	680
James Short	5	2	241	48	601	120
Kinahan School	5	2	243	49	596	119
Killarney	8	3	752	94	1,438	180
Manchester	8	2	807	101	1,424	178
Milton Williams	8	2	793	99	2,671	334
Mount View	8	5	4,298	537	6,557	820
Ogden	8	2	1,178	147	2,781	348
Parkhill	8	3	1,403	176	2,262	283
Parkdale	8	3	1,701	213	4,339	542
Ramsay	8	5	2,222	278	5,130	641



	Days Open	Days Per	Total Attendance	Average Weekly Attendance	Total Participation	Average Weekly Participation
Renfrew	7	5	2,165	309	7,999	1,143
Riley	8	5	9,330	1,166	15,166	1,896
Rosedale	8	3	1,450	181	2,755	345
Richmond	8	2	858	107	2,944	368
Riverside	8	3	952	119	1,826	228
Sherwood	8	3	935	117	3,241	405
South Calgary	8	3	5,223	653	10,154	653
Sir James Lougheed	8	2	699	88	1,338	167
St. Raymond	8	2	864	108	2,463	308
Sunalta	6	3	696	116	1,750	292
Tuxedo	8	5	3,030	379	7,901	988
Thorncliff	7	2	540	77	1,420	203
Victoria	8	3	1,409	176	3,340	418
Wildwood	8	3	1,296	162	2,744	343
Windsor Park	8	3	1,388	174	3,712	414
West Mount Pleasant	8	5	1,855	232	8,238	1,029
<b>TOTAL</b>			<b>65,650</b>		<b>149,551</b>	

Special Events: Our playgrounds held a number of special events, such as hikes, weiner roasts, scavenger hunts, pet shows, puppet shows etc. These activities have assumed an increasingly important roll in playground organization, involving as they do, every member of the family.

Stampedes, Carnivals and Circuses were the most popular and almost all were preceded by a Parade in the vicinity of the playground, with decorated bicycles, chuck wagons, and scooters being the motif.

Swimming Meet: Three elimination meets preceded the annual inter-playground swim meet. These were held at three of the City owned pools, West Mount Pleasant, Bowview and South Calgary; the final meet was held August 18th at the Bowview Pool and at the conclusion of the events, which included swimming and diving, ribbons and individual prizes were awarded the winners by Mrs. Maude Riley, of the Alberta Council on Child and Family Welfare. Mountview playground won aggregate honors and also the boys' team championship, while Colonel Walker playground had the highest total for girls.

Track Meet: The annual inter-playground track meet was held at Mewata Stadium on Wednesday, August 20th, eliminations taking place in the morning with finals in the afternoon. Riley Park were successful in carrying off all three awards, obtaining the most points in boys' and girls' classes as well as the grand aggregate. Once again Mrs. Riley presented prizes to the individual winners.

Craft Display: A very successful craft display was held at the Mewata Recreation Hut on Friday, August 22nd and Riley Park was successful in carrying off this portion of the summer activities. As was the usual custom, awards were presented to the successful contestants by Mrs. Riley.

COURTESIES:

Once again I wish to express sincere appreciation to the following for their co-operation and assistance during the past year:-

Radio Stations, C.K.X.L., C.F.C.N. and C.F.A.C., also CHCT-TV, for their willing assistance in publicity releases; to the Calgary Herald, Albertan, North Hill News, and South Side Mirror, for space in their valued publications; to Mr. Jack Way, Calgary Boys Club, Dr. F. H. Tyler, Executive Director, Council of Community Services, and to Mrs. Maude Riley, of the Alberta Council on Child and Family Welfare, for her invaluable donation of awards for the playground Track, and Field Meet, Swim Meet, and Craft Display.

Appreciation is also extended to Mr. A. Munro, Parks Superintendent, and Mr. W. Garnett, Director of Recreational & Mechanical Divisions, for their assistance and encouragement.

Respectfully submitted,

J. R. Houghton, Supervisor,  
Recreation Centres & Playgrounds

REPORT

SUPERVISOR OF STADIA, POOLS, AND RINKS -

J. TAYLOR

Stadia, Pools and Rinks:

During the year 1958, the playing fields at each of the stadia were top dressed and seeded. This prohibited the use of the fields until June or July depending on the extent of the repairs. No major repairs were made to the buildings or fences, therefore, it is felt consideration should be given to the painting of the bleacher seats on the West side of the Mewata Stadium, and to the repairs to the fencing at Renfrew Park.

Due to the extremely mild fall weather each of the playfields were severely beaten as the season was extremely extended and the usual protection by frost was not in evidence. This is particularly so at Mewata and a very extensive renovation will be necessary on the playing field.

Mewata Stadium:

A very interesting season of events was carried on at this location and the statistics show very extensive patronage.

23 Track meets with the attendance of	11,560
29 Soccer matches - attendance	7,420
8 Senior High School rugby matches - attendance	10,467
12 Junior High School rugby matches - attendance	2,500
11 Junior Rugby games - attendance	9,650
10 Professional rugby - attendance	119,549
Attendance for non-professional sport	39,097
Attendance for professional sport	<u>119,549</u>
Total -	158,646

Broadview Soccer Field:

This field was developed primarily for the Soccer Association, but in co-operation with the City of Calgary and District Football Association, Junior High School Rugby was organized and games played at this location during the afternoons with the expansion of the high school system, it is quite evident that consideration will have to be given to the development of additional areas and it is suggested that the High School Organization should develop the necessary playfields for junior football on their own areas, which have now been increased in size.

45 Soccer games - attendance	4,125
5 High School rugby games - attendance	<u>200</u>
Total -	4,325

Renfrew Ball Park:

This area was developed six years ago and the fencing at Renfrew was moved from the former Mewata Ball Park. Since that time very little maintenance has been carried out on the buildings or fence, and it is felt that consideration be given to this area in 1959. 97 baseball games were played with an attendance of 5,361.

### Renfrew Ball Park (Cont'd.)

As no admission is charged for soccer or English Rugby, the details of games in these sports have not been recorded.

### Commercial Hockey Rinks:

The City Recreation Department prepares and maintains hockey rinks at three locations for the purpose of providing hockey facilities for organized clubs which rent ice accommodation throughout the winter season. These areas are totally independent of community facilities and are necessary to serve citizens playing in organized church leagues, commercial leagues, industrial leagues and serving associations such as solicitors, accountants, and professional people who enjoy games between various offices. In some instances communities rent the facilities when their organization is not sufficiently developed to carry on maintenance in their own areas. During 1958 a total of 613 games of hockey were played.

### Artificial Ice Rink:

The South Calgary Artificial Ice Rink is used very extensively by organized hockey clubs throughout the season and is undoubtedly the biggest of our rink facilities. We have found that it was impossible to prepare ice until approximately November 10th, especially if we have a warm Indian Summer in October, as the plant cannot compete with the strong, summer, therefore our operating season is considered November 15th to March 31st with 282 games being played.

The schedule shows four nights of hockey each week and one evening and two afternoons for public skating. This policy is very effective until the communities have developed their own areas at which time the demand for pleasure skating falls off greatly.

### Swimming Pools:

The summer season of 1958 was a very warm summer. The pools were working at full capacity throughout the season. Three swimming pools were opened on May 17th and continued until September 3rd. The fourth pool Ogden-Millican, was opened on August 11th and ran through until September 3rd. The attendance in this pool was not up to expectations but it is hoped that it will be on par with the rest of the pools during 1959. The total attendance at our pools was 173,732.

In co-operation with the Canadian Red Cross Water Safety Division swimming instruction was carried on during the month of June. Each student was admitted by purchasing a dollar swim ticket which covered all lessons. The Red Cross workers provided the instruction at no charge.

### Tiny Mite Activities:

A very great interest is being developed in Tiny Mite Hockey. This activities permits the children under the age of 12 years to be taught on the basic skills of our Canadian game at an age which is considered unsuitable for organized sports. The 1958-59 season saw 32 clubs operating in four sections - games played each Saturday morning on the civic commercial rinks and on Wednesday evenings on Community Rinks. Each club had played a minimum of 14 games throughout the season with a semi-finals being 2 game total point and the finals 2 out of 3. There were a total of 224 games plus play-offs.

Tiny Mite Activities: (Cont'd.)

Continuing interest is being shown in Tiny Mite Hockey. This activity permits children under the age of 12 years to be taught the basic skills of our National game. The year 1958-59 season saw 32 clubs operating in four sections - games played each Saturday morning on the Civic Commercial Rinks, with Tuxedo being the eventual winners of the Anglo-American Exploration Trophy. Sincere thanks are extended to this firm for providing, for the fifth successive year, crests, to individual members of the winning club.

Table Tennis:

A most successful city-wide table tennis tournament was again held, the locale being Balmoral School. Large numbers of entries were received in all categories, with the calibre of play being outstanding, particularly by members of the German-Canadian Club who carried off the majority of the awards. Large and appreciative audiences were in attendance each evening of the four-day tournament.

Little League Baseball:

Little league baseball continued to function successfully in the City of Calgary, and although playing fields, bleachers, etc., are at a premium, the Recreation Division did their best to provide these facilities, and continued to share, to some extent, in the success of this organization.

Fastball:

Close co-operation with the Calgary and District Fastball Association enabled allocation of diamonds for practice and league games to be undertaken with a minimum of difficulty. It is felt, however, that there is an urgent need for more sites of this nature in the City.

Respectfully submitted.

J. TAYLOR, Supervisor,  
Stadia, Pools and Rinks.

1958

STATEMENTS OF EXPENDITURES

AND REVENUES

GENERAL ADMINISTRATION:

Appropriation:       \$ 62,908.00  
Expenditures:        64,538.33

Salaries	\$ 49,239.37
Office Supplies	2,013.33
Mechanical Accounting Charges	7,404.41
Telephones	216.05
Auto Allowances	540.00
Vehicle Rentals	4,340.58
Office Equipment	311.58
Misc. Supplies	26.61
Transportation Expense	756.09
	<u>64,848.02</u>

Credits:

Rental, Supt. Residence	300.00	
Miscellaneous	<u>9.69</u>	
	309.69	\$ 64,538.33

ST. GEORGE'S ISLAND ZOO:

Appropriation:       \$ 60,740.00  
Expenditures:        63,984.49

Salaries	\$ 5,640.00
Wages	29,351.60
Gas Heating	1,605.86
Electric Light Power & Water	6,871.79
Telephones	123.00
Mtce. Buildings, Signs & Fences	2,368.38
Mtce. Plumbing Installations	2,725.12
Supplies and Feed	14,273.59
Equipment Charges	307.76
Vehicle Charges	<u>1,137.39</u>
	64,404.49

Credits:

Rental, Curators Residence	<u>420.00</u>	63,984.49
----------------------------	---------------	-----------

TREE PLANTING:

Appropriation:       \$ 35,000.00  
Expenditures:        34,358.77

Wages	\$ 12,655.15
Vehicle & Equipment Charges	5,944.03
Nursery Supplies	14,749.51
Sundries	<u>1,010.08</u>

34,358.77

PARKS DISTRICTS

Appropriation: \$ 263,190.00  
 Expenditures: \$ 297,600.42

	WAGES	WATER	GAS HEATING	LIGHT & POWER	TELEPHONES	MICE. OUTDOOR SPRINKLER SYS.	MTCE. BLDGS., SIGNS, ETC.	SUPPLIES	EQUIPMENT CHARGES	TRUCK CHARGES	TOTAL
Central	13,914.06	508.40	29.22	115.43		124.16	614.49	2,921.38	2,310.74	881.66	21,419.54
Crescent	18,079.78	1,951.60	77.74	11.13		424.82	1,797.20	1,749.31	3,788.04	1,429.06	29,308.68
Elbow	16,555.72	820.00	83.56	19.73	75.00	155.72	1,664.41	3,587.10	4,065.07	1,955.48	28,981.79
Glendale	15,328.21	2,132.00			18.75	382.57	382.42	1,808.01	4,020.77	1,251.78	25,324.51
Mewata & Westmount	18,158.49	328.00				208.65	435.69	1,523.76	4,612.30	1,388.99	26,655.88
Mountview	17,957.45	705.20	109.12	80.58	65.00	269.08	2,312.28	1,986.24	2,882.43	962.93	27,330.31
Riley	23,456.92	1,640.00	66.40	22.80	75.00	357.26	1,990.73	2,685.43	4,706.37	2,236.12	37,237.03
St. George's	19,844.19	738.00				1,769.39	2,862.57	1,687.23	6,313.52	2,540.70	35,755.60
South Calgary	14,748.08	918.40		29.75	56.25	162.40	350.62	1,002.05	3,142.88	1,067.22	21,477.65
Thorncliffe	5,597.01	1,312.00				47.75	33.08	1,212.66	1,534.65	826.25	10,563.40
Windsor	16,738.06	442.80	16.76	22.80		308.69	251.90	889.77	3,557.46	1,614.84	23,843.08
Prov. Grounds & 10 St. Rockery	14,191.37					16.99	46.32	3,412.92	2,945.23	1,304.03	21,916.86
Surveying & Mapping of Water Lines											3,900.00
Repairs to Wading Pools											148.06
<b>TOTALS :</b>	<b>194,569.34</b>	<b>11,496.40</b>	<b>382.80</b>	<b>302.22</b>	<b>290.00</b>	<b>4,227.48</b>	<b>12,741.71</b>	<b>24,465.86</b>	<b>43,879.46</b>	<b>17,459.06</b>	<b>313,862.39</b>

CREDITS:

Interdepartmental	667.97
Private Accounts	3,376.65
Compensation	221.90
Capital Budget	7,376.00
Suspense Accounts	3,940.27
Miscellaneous	627.33
Int. from Canotoph Fund	51.85

16,261.97

\$ 297,600.42

BOULEVARDS:

Appropriation: \$ 42,055.00  
Expenditures: 32,324.07

Wages	\$ 32,880.41	
Supplies	2,110.17	
Equipment Charges	2,144.79	
Vehicle Charges	<u>5,580.54</u>	
	42,715.82	
<u>Credits:</u>		
Interdepartmental	7,402.84	
Private Accounts	2,496.52	
Compensation	<u>492.39</u>	
	10,391.75	32,324.07

GOLF COURSE:

Appropriation: \$ 39,150.00  
Expenditures: 41,743.15  
Revenue: 44,171.76

Salaries (Steward)	2,900.00	
Wages	19,382.87	
Gas Heating	247.10	
Electric Light Power & Water	1,629.83	
Telephone	77.30	
Mtce. Buildings	2,408.52	
Mtce. Plumbing Installations	3,771.26	
Equipment Charges	7,636.62	
Vehicle Charges	781.03	
Supplies	<u>2,908.62</u>	41,743.15

Revenue:

Green Fees:

956 Junior	@ .75	717.00	
535 Junior	@ 1.00	535.00	
4959 Senior	@ 1.00	4,959.00	
8298 Senior	@ 1.50	12,447.00	
23291 9 holes	@ .60	<u>13,974.60</u>	
			32,632.60

Season Tickets:

Gents (118)	4,130.00	
Ladies (73)	1,825.00	
Junior (113)	1,356.00	
Man and Wife (35)	<u>1,925.00</u>	
		9,236.00

Locker Rents: 138.00

Beer Sales: 5,288.16  
Empties 294.80  
5,582.96

Less:

Cost of Beer & License 3,417.80  
2,165.16

44,171.76



C E M E T     L E S

Appropriation:     \$    160,105.00  
Expenditures:         170,167.43

UNION

Salaries	\$	4,409.96	
Wages		29,824.04	
Water		688.80	
Gas Heating		160.88	
Electric Light & Power		42.56	
Telephone		78.00	
Mtce. outdoor sprinkler system		4,776.28	
Mtce. Buildings, etc.		1,442.01	
Supplies		2,044.49	
Equipment Charges		7,611.33	
Vehicle Charges		<u>1,740.51</u>	
		52,818.86	

Credits:

Int. Perp. Care Fund	3,343.31	
Capital Budget	2,346.98	
Suspense Accounts	376.83	
Miscellaneous	1,282.10	
Sundry Receipts	<u>76.00</u>	
	7,425.22	45,393.64

READER'S ROCK GARDEN:

Wages	8,093.65	
Mtce. Sprinkler System	933.45	
Mtce. Buildings, etc.	1,045.67	
Supplies	323.20	
Equipment Charges	516.52	
Vehicle Charges	<u>91.28</u>	
	11,003.77	

Credits:

Production	<u>5,697.20</u>	5,306.57
------------	-----------------	----------

BURNSLAND:

Wages	27,996.99	
Water	656.00	
Mtce. Outdoor Sprinkler System	3,179.97	
Mtce. Buildings, etc.	2,101.40	
Supplies	2,584.25	
Equipment Charges	4,994.87	
Vehicle Charges	<u>615.27</u>	
	42,128.75	

Credits:

Int. Perp. Care Fund	6,140.34	
Sundry Receipts	<u>242.60</u>	
	6,382.94	35,745.81

QUEEN'S PARK CEMETERY:

Salaries	4,212.00
Wages	46,229.72
Water	1,558.00
Gas Heating	153.50
Electric Light & Power	186.42
Telephone	100.50
Mtce. Outdoor Sprinkler System	2,425.54
Mtce. Buildings, etc.	968.41
Supplies	5,272.91
Equipment Charges	11,394.30
Vehicle Charges	<u>2,280.55</u>
	74,781.85

Less Credits:

Int. Perp. Care Fund	7,214.11	
Rental Caretakers Residence	300.00	
Sundry Receipts	2,565.38	
Miscellaneous	<u>243.45</u>	
	10,322.94	\$ 64,458.91

ST. MARY'S CEMETERY:

Wages	11,443.94
Water	114.80
Mtce. Outdoor Sprinkler System	518.53
Supplies	692.12
Equipment Charges	3,637.31
Vehicle Charges	<u>843.07</u>
	17,249.77

Less Credits:

Int. Perp. Care Fund	1,907.24	
Sundry Receipts	<u>58.00</u>	
	1,965.24	\$ 15,284.53

CHINESE CEMETERY:

Wages	2,998.04
Water	82.00
Mtce. Sprinkler System	21.66
Mtce. Buildings, etc.	16.76
Supplies	119.63
Equipment Charges	882.83
Vehicle Charges	<u>77.12</u>
	4,198.04

Less Credits:

Int. Perp. Care Fund	167.07	
Sundry Receipts	<u>53.00</u>	
	220.07	\$ 3,977.97

SUMMARY ALL CEMETERIES:

Union	\$ 45,393.64
Reader's Rock Garden	5,306.57
Burnsland	35,745.81
Queen's Park	64,458.91
St. Mary's	15,284.53
Chinese	<u>3,977.97</u>

\$ 170,167.43

WEED CONTROL:

Appropriation:	\$ 10,600.00
Expenditures:	16,835.58

Wages	9,445.56
Supplies	2,634.33
Equipment Charges	3,287.97
Vehicle Charges	1,635.12
	<u>17,002.98</u>

Less Credits:

Private Jobs	<u>167.40</u>
--------------	---------------

\$ 16,835.58

SWIMMING POOLS:

Appropriation: \$ 58,980.00  
Expenditures: 58,500.93

	<u>Mt. Pleasant</u>	<u>S. Calgary</u>	<u>Bowview</u>	<u>Millican</u>
Salaries	3,442.70	3,065.20	2,852.72	270.00
Wages	9,534.50	9,179.64	8,920.73	3,175.16
Gas Heating	814.68	678.16	894.38	185.04
Electric Light				
Power & Water	1,052.84	947.79	1,744.62	303.50
Telephones	58.05	57.75	45.50	10.65
Mtce. Bldgs, etc.	1,181.40	771.72	481.58	701.24
Supplies	2,581.55	1,758.96	2,662.90	563.03
Equipmt. Charges	488.17			
Vehicle Charges	30.00	37.70	50.34	35.00
	<u>19,183.89</u>	<u>16,496.92</u>	<u>17,652.77</u>	<u>5,243.62</u>
				Total: \$ <u>58,577.20</u>

Revenue Statistics:

Swim Tickets:

	<u>Mt. Pleasant</u>	<u>S. Calgary</u>	<u>Bowview</u>	<u>Millican</u> (One month only)
10¢	32,104 = 3210.40	39097 = 3909.70	25450 = 2545.00	5383 = 538.30
15¢	15,543 = 2331.45	18790 = 2818.50	11808 = 1771.20	2634 = 395.10
35¢	6,527 = 2284.45	6778 = 2372.30	7427 = 2599.45	2191 = 766.85
<u>Attendance:</u>	<u>54,174</u>	<u>64,665</u>	<u>44,685</u>	<u>10,208</u>

Towels:

10¢ 464 = 46.40 364 = 36.40 516 = 51.60 9 = .90

Swim Suits:

15¢ 266 = 39.90 378 = 56.70 486 = 72.90 19 = 2.85  
25¢ 343 = 85.75 348 = 87.00 183 = 45.75 15 = 3.75

Misc. Revenue:

3.50 2.00 40.00  
\$ 8,001.85 \$ 9,282.60 \$ 7,125.90 \$ 1,707.75

Total: \$ 26,118.10

SPORTS AND RECREATION ADMINISTRATION:

Appropriation: \$ 19,832.00  
Expenditures: 21,199.77

Salaries	13,304.62	
Wages	1,349.34	
Office Supplies	1,185.01	
Auto Allowances	1,763.06	
Electric Light	65.55	
Telephones	289.80	
Insurances	778.18	
Vehicle Charges	1,571.91	
Gas Heating	53.25	
Misc. Supplies	73.76	
Mtce. Buildings	<u>765.29</u>	\$ 21,199.77

MEWATA STADIUM:

Appropriation: \$ 20,820.00  
Expenditures: 17,367.80

Wages	12,612.39
Gas Heating	479.33
Light and Water	1,256.23
Telephones	52.00
Insurance	376.68
Mtce. Buildings, etc.	2,471.71
Supplies	915.94
Equipment Charges	2,161.56
Vehicle Charges	<u>753.64</u>
	21,079.48

Less Credits:

Flood Lights, etc.	2,111.68	
Concession Fee	<u>1,600.00</u>	
	3,711.68	\$ 17,367.80

STATISTICS - STAMPEDEERS

	<u>ATTENDANCE</u>		<u>ATTENDANCE</u>
Game #1	14,517	Game #5	12,628
Game #2	16,721	Game #6	14,748
Game #3	17,308	Game #7	12,049
Game #4	15,031	Game #8	13,529

Gate percentage:	7½%	\$ 24,797.04	
Parking Lot Revenue		<u>980.92</u>	
			\$ 25,777.96

RENFREW BALL PARK:

Appropriation: \$ 6,820.00  
Expenditures: 5,838.86

Wages	\$ 2,850.59
Gas Heating	137.36
Electric Light & Power	99.14
Telephone	71.50
Mtce. Buildings, etc.	724.82
Supplies	348.47
Sports Equipment Mtce.	128.96
Mtce. Sprinkler System	211.96
Equipment Charges	653.66
Vehicle Charges	612.40

\$ 5,838.86

BROADVIEW SOCCER FIELD:

Appropriation: \$ 2,820.00  
Expenditures: 2,395.54

Wages	\$ 1,857.04
Gas Heating	29.32
Electric Light	9.72
Mtce. Buildings, etc.	105.46
Equipment Charges	231.26
Vehicle Charges	213.30

---

2,446.10

Less Credits:

Overtime Charges	50.56
------------------	-------

---

\$ 2,395.54

ARTIFICIAL RINK:

Appropriation: \$ 11,854.00  
Expenditures: 9,155.89

Salaries	\$ 4,392.32	
Wages	493.36	
Gas Heating	504.68	
Electric Light, Water and Power	2,920.02	
Telephone	33.00	
Mtce. Buildings, etc.	548.07	
Supplies	83.18	
Equipment Charges	180.67	
Vehicle Charges	41.26	
		\$ 9,196.56

NATURAL ICE RINKS:

Appropriation: \$ 56,760.00  
Expenditures: 50,127.62

Wages	25,635.51	
Gas Heating	210.86	
Electric Light & Power	1,120.48	
Water	2,000.00	
Telephone	58.50	
Mtce. Equipment	1,892.86	
Mtce. Plumbing, etc.	4,263.16	
Mtce. Lighting	333.18	
Supplies	1,135.95	
Equipment Charges	6,129.68	
Vehicle Charges	6,555.02	
Hired Equipment	792.42	
		\$ 50,127.62

PLAYGROUNDS:

Appropriation: \$ 57,583.00  
Expenditures: 46,797.47

Salaries	7,524.48	
Wages	21,768.67	
Insurance	31.50	
Mtce. Buildings, etc.	450.34	
Mtce. Sports Equipment	11,143.50	
Supplies	3,464.14	
Vehicle Charges	1,961.85	
Office Equipment	306.10	
Band Contests	574.00	
		\$ 47,224.58
<u>Less Credits:</u>		
Registration Re: Day Camp	229.00	
Sundry Receipts	198.11	
	427.11	\$ 46,797.47

RECREATION CENTRES:

Appropriation: \$ 45,577.00  
Expenditures: 37,839.34

Salaries	\$ 12,701.90
Wages	11,541.87
Auto Allowances	601.50
Mtce. of Facilities	340.18
Sports & Rec. Equipment	1,559.24
Supplies	1,112.11
Vehicle Charges	1,369.59
School Rentals	9,442.15

38,873.97

Less Credits:

Sundry Receipts: 829.20

\$ 37,839.34

MEWATA RECREATION HALL:

Appropriation: \$ 200.00  
Expenditures: 366.55 Cr.

Mtce. of Buildings	251.33
Gas Heating	168.32
Electric Light	147.82
Telephone	78.80
Supplies	171.18

817.45

Less Credits:

Rentals 1,184.00

\$ 366.55 Cr.



SUPPORTING COSTS:

Cost of Operation:

	<u>Estimated</u>	<u>Actual</u>
Repair Shop & Equipment		
Pool	\$ 95,700.00	\$ 125,395.56
Plumbing Shop	53,550.00	73,713.93
Nursery	26,990.00	26,831.07
Greenhouse	14,505.00	13,593.46
Garden Material Stores	34,000.00	23,536.67
Truck Pool	43,940.00	57,870.05
Water Account	18,000.00	15,000.00
Paint Shop	9,500.00	9,176.24
	<u>\$296,185.00</u>	<u>\$ 345,116.98</u>

SUMMARY OF APPROPRIATIONS & EXPENDITURES

PARKS & CEMETERIES DIVISION:

	<u>Appropriation</u>	<u>Expenditures</u>
Administration	62,908.00	64,538.33
Park Districts	263,190.00	297,600.42
St. George's Island Zoo	60,740.00	63,984.49
Golf Course	39,150.00	41,743.15
Boulevards	42,055.00	32,324.07
Tree Planting	35,000.00	34,358.77
Weed Control	10,600.00	16,835.58
Cemeteries	160,105.00	170,167.43
	<u>\$ 673,748.00</u>	<u>\$ 721,552.24</u>

SPORTS & RECREATION DIVISION:

Administration	19,832.00	21,199.77
Stadium	20,820.00	17,367.80
Renfrew Ball Park	6,820.00	5,838.86
Broadview Soccer Park	2,820.00	2,395.54
Swimming Pools	58,980.00	58,577.20
Artificial Ice Rink	11,854.00	9,196.56
Natural Ice Rinks	56,760.00	50,127.62
Playgrounds	57,583.00	46,797.47
Recreation Centres	45,577.00	37,839.34
Mewata Recreation Hall	200.00	366.55
	<u>\$ 281,246.00</u>	<u>\$ 248,973.61</u>

Credit

SUMMARY:

Parks & Cemeteries Division	\$ 673,748.00	\$ 721,552.24
Sports & Rec. Division:	281,246.00	248,973.61
	<u>\$ 954,994.00</u>	<u>\$ 970,525.85</u>

GENERAL REVENUE STATEMENT FOR 1958

	<u>Estimated</u>	<u>Actual</u>
Ice Rinks	3,700.00	3,090.10
Golf Course	38,000.00	44,171.76
Swimming Pools	25,000.00	26,118.10
Stadium & Ball Parks	2,500.00	2,349.50
Cemeteries	31,700.00	31,875.68
	<hr/>	<hr/>
	\$ 100,900.00	\$ 107,605.14
	<hr/> <hr/>	<hr/> <hr/>